



www.chagrinhunterjumperclassic.org  
<http://horseshowsonline.com>

Entries close June 19th



Photo courtesy of Peggy Turbett

# 2017 Chagrin Hunter Jumper Classic

In memory of Billie Howland Steffee



Billie and All the Gold

**Cleveland Metroparks  
 Polo Field**  
 Moreland Hills, Ohio  
**JULY 6-16, 2017**



**Opening Week (non-rated):**  
 July 6–8 UP & OVER; OPHA;  
 KHJA; IHJA; OHJA; WPA  
 PHA, VHSA, ETHJA, MOHJO

**Rated Week:** July 11–16  
 (Ticketed Warm-ups July 10)  
 USEF Premier / Jumper 4\*  
 Rated; WCHR; OPHA; KHJA;  
 IHJA; OHJA; WPA PHA; Up &  
 Over; VHSA; ETHJA; MOHJO

**Riders with Disabilities  
 Horse Show**  
 Monday, July 10, 10–2 p.m.

**\$50,000** 52nd Annual Cleveland Grand Prix in memory of Billie Howland Steffee

**\$20,000** USHJA International Hunter Derby

**NEW \$10,000** Billie H. Steffee Future Hunter Stake

**\$10,000** Welcome Stake Wolf Creek E.C. and the Shaughnessy Family

**\$5,000** USHJA National Hunter Derby sponsored by Ohio CAT

**\$5,000** Mini Grand Prix, courtesy of Leikin Motor Companies

**\$5,000** Horse and Hound Relay presented by Geauga Feed & Grain Supply

**\$3,500** Mini Hunter Derby sponsored C Jarvis /Assured Partners

**NEW \$2,500** Pro Am sponsored by the Morrow Family Foundation

**NEW \$2,500** Low Children/Adult Jumper Classic in memory of James and Audrey Millar

**NEW \$1,500** 1.0 - 1.2m Gamblers Choice

**NEW \$650** High Point Trainer Award sponsored by Buckeye Nutrition



Dear Exhibitor:

You will be delighted with your experience at the Chagrin Hunter Jumper Classic. We promise. The historic show grounds, nestled in bucolic Chagrin Valley—yet close to Cleveland, one of the nation’s hottest cities for entertainment, sports and food (according to *Forbes Magazine*) provides an **unparalleled** experience.

You’ll ride in the hoof prints of the greatest equestrians of all times—George Morris, Rodney Jenkins, Mary and Frank Chapot, Michael Matz, Steve Stephens, Bernie Traurig, Joe Fargis, Candice King, Margie Engle, Kent Farrington—and the list goes on. Why? The Cleveland Grand Prix is **unprecedented** as the Western Hemisphere’s first show jumping grand prix. For this distinction and other contributions to the sport and industry, the Chagrin Hunter Jumper Classic received the coveted USEF Heritage Competition award in December 2016.

With an intimate capacity of 600 horses, yet prize money totaling close to \$200,000, a trip to Cleveland from your home stable or on your way around the circuit pays off. **Unbelievable** hospitality—from affordable lodging to amazing parties, fun classes, hilarious activities, and a Midwest welcome from our volunteers and show management—will make you want to come back for more. And we sure hope you do.

From our charities, board members and the Ohio equestrian community, thank you for considering our show.





*Everything you need*

TACK • BLANKETS & SHEETS • HORSE CARE • APPAREL

*Catered to all levels*

FROM LEADLINE TO GRAND PRIX ... WE'VE GOT YOU COVERED!

*With exclusive brands*

JOSEPH STERLING • ULTRA • DURA-TECH • PINNACLE • EASY-UP

800.365.1311

sstack.com

**SCHNEIDERS**

Value Priced Horse Supplies Since 1948

8255 E. Washington St., Chagrin Falls, OH 44023

*Just 5 miles from the show grounds!*

Store Hours: Mon-Wed, Fri 10am-6pm | Thurs 10am-7pm | Sat 10am-5pm | Closed Sundays

# Chagrin Hunter Jumper Classic



## SHOW OFFICERS

Lori Proch                      Co-Chairman  
Tom Visconsi                 Co-Chairman



## BOARD OF TRUSTEES

Megan Moshontz-Bash  
Elizabeth Conlin  
Cindy Foster  
Laura Hammel

Betsy Juliano  
Debbie Liff  
Elizabeth Porter  
Marie Salibra

Michael Shaughnessy  
Patrick Swann  
D. Jesse Terdan

## HONORARY DIRECTORS

Laddie G. Andahazy\*  
John N. Davenport  
Walter Furlong\*  
Charles Kiney, Jr\*

Howard Lewis\*  
Max Lammers\*  
Russell Leasure  
Sylvia Reitman

Billie Steffee\*  
Stanley Stone, Jr.\*  
Leah D. Stroud\*

\*deceased

## SHOW OFFICIALS

Philip J. DeVita  
Will Segedy  
Barney Mallace (901) 606-3450  
Linda Seay (615) 943-9128  
Louise Hensen  
Jason Hill & Associates  
Jumps By Fuzzy  
Anne Gittins Photography  
Max Motil Inc  
Buckeye Veterinary Service LLC  
Lynne Pollack (440) 759-1969

Manager  
Technical Coordinator  
Show Secretary – Rated Week  
Show Secretary- Opening Week  
Secretary  
Farrier  
Jump Supplier  
Photographer  
Equine Supply  
(440) 834-8821  
Horse Show Concierge

Mail All Entries to: Chagrin Hunter Jumper Classic  
c/o 9129 Old Meadow Drive, Chagrin Falls, OH 44023  
Faxed Entries will NOT be accepted.

Opening Week Entry Info  
Linda Seay  
(615) 943-9128

[www.horseshowsonline.com](http://www.horseshowsonline.com)  
[www.chagrinhunterjumperclassic.org](http://www.chagrinhunterjumperclassic.org)

Rated Week Entry Info  
Barney Mallace  
(901) 606-3450

# Chagrin Hunter Jumper Classic

## Opening Week July 6-8, 2017

Jumper Judge	Dennis M. Moran
Hunter Judge	Frank Conway
Hunter Judge	Carrie Dahmer
Hunter Announcer	Cami Blanchard
Jumper Announcer	Dennis M. Moran
Course Designer	Eric Mayberry
Paddock Master	Larry Wilson

## Riders With Disabilities Horse Show July 10, 2017

## “Premier” Hunter Rated / Jumper 4\* - July 11-16, 2017

Hunter / Derby/ Equitation Judges	Carlton Brooks Bill Ellis Skip Thornbury Lauri Story
Breeding	Carlton Brooks
Jumper/Equitation Judge	Dennis M. Moran
Jumper Judges	Jenny Ross-Koning George Thornbury
Jumper Announcer Hunter Announcer	Dennis M. Moran Brian Jones
Course Designers: Hunter/USHJA International Derby Jumper	Eric Mayberry Scott Starnes
Steward	Mary Choate
Schooling Supervisor	Faith Alicea
Paddock Masters	Lynne Briggs Christine Rheinheimer Cami Blanchard

Opening Week Entry Info

Linda Seay  
(615) 943-9128

[www.horseshowsonline.com](http://www.horseshowsonline.com)  
[www.chagrinhunterjumperclassic.org](http://www.chagrinhunterjumperclassic.org)

Rated Week Entry Info

Barney Mallace  
(901) 606-3450

# THANK YOU TO OUR SPONSORS & PARTNERS

Schneider's Saddlery

Chagrin Valley

Wolf Creek Equestrian Center  
& The Shaughnessey Family

Chamber of Commerce

In Memory of Dr. Cyndi Roller

Mercedes-Bez of Willoughby |  
Volvo of Willoughby - Leikin  
Motor

C. Jarvis / Assured Partners

Tyler-Stone Wealth  
Management

RAM Truck & Deacon

Geauga Feed & Grain Supply

Laurel Tree Advisors

Ohio CAT

Buckeye Nutrition

The Morrow Family  
Foundation

In Memory of  
James & Audrey Millar

Key Private Bank

Buckeye Veterinary Service

S.A. Cumunale Co.

Cleveland Mounted Unit

Edwins Restaurant &  
Leadership Institute

Everything But the House  
(EBTH.com)

Boo Geisse, Yoga

The Rose Foundation

The Atlantic Hospitality Group

McHale & Koepke  
Communications

Middle West Spirits

Playground World

Hudock Moses Marketing

The Happiest Ride on Earth

## OUR INVALUABLE COMMITTEE MEMBERS

Becca Bendlak

Elizabeth Biddick

Dan Cicora

Tara Cicora

Abigail Collins

Cathy Bibbs Cornell

Sandra Crabtree

Joyce Dickson

Ann Dolan

Angela Dotson

Janna Dresing

Vicki DuBay

Mary Ellen Fridrich

Boo Geisse

Lynn Giltinan

Judy Hauser

Scott Huggett

Elizabeth Kahl

Joseph Knight

Sally Koepke

Anne Marie Kollander

Grace Libava

Lynne Pollack

Wendy Repchick

Mary Ann Roush

Penny Schinagle

Christie Schneckner

Kate Shaughnessey

Avery Warner

Makayla Windau



# IMPORTANT EXHIBITOR INFORMATION



## ONLINE ENTRIES

Competitors are encouraged to submit their show entries online at

[www.horseshowsonline.com](http://www.horseshowsonline.com)

**Faxed Entries WILL NOT BE ACCEPTED**

## OPENING WEEK – JULY 6 - 8

Stalls available Wednesday, July 5<sup>th</sup> at Noon.

Must be vacated by Sunday, July 9<sup>th</sup> at 9:00 a.m.

## DON'T FORGET

Opening weekend Entries MUST be closed out separately before the Rated Show begins.

There is absolutely **NO PARKING IN THE BARN AREA.**

Any vehicle parked in the barn area WILL BE TOWED at the owner's expense.

## TICKETED WARM UPS WILL BE HELD

Monday, July 10<sup>th</sup> at \$25 per round.

## CVHJC SHOW – JULY 11 - 16

Stalls available Sunday, July 9<sup>th</sup> at 4 p.m. Must be vacated by Monday, July 17<sup>th</sup> at 11:00 a.m.

## MINORS OPERATING VEHICLES

As per USEF GR 1301.7 Minors who do not have a valid driver's license which allows them to operate a motorized vehicle in the state in which they reside will not be permitted to operate a motorized vehicle of any kind including, but not limited to golf carts, motorcycles, scooters, or farm utility vehicles on the competition grounds of licensed competitions.

## GOLF CARTS MUST BE PRE-ORDERED

There will not be any extra golf carts to rent on the show grounds. All golf cart orders must be made in advance by emailing Lori Proch at [lproch@assuredpartners.com](mailto:lproch@assuredpartners.com). Daily rental will be \$80 per day.

**DOGS:** All dogs must be on leashes at all times.

## ASTM APPROVED HELMETS

ALL PERSONS MOUNTED ON COMPETITION GROUNDS must wear properly fitted & fastened approved headgear.

## EXTENSION CORDS & POWER

Must be 3 wire (grounded). Heavy Duty – 12 gauge or higher.

Due to limited power resources at the Cleveland Metroparks Polo Fields, Microwaves, Refrigerators, Stoves, Ice Makers and similar appliances will NOT BE ALLOWED in the barn area.

## FOR QUESTIONS CONTACT SHOW CONCIERGE

Lynne Pollack (440) 759-1969

Opening Week Entry Info

Linda Seay

(615) 943-9128

[www.horseshowsonline.com](http://www.horseshowsonline.com)

[www.chagrinhunterjumperclassic.org](http://www.chagrinhunterjumperclassic.org)

Rated Week Entry Info

Barney Mallace

(901) 606-3450

## PLEASE JOIN US FOR THESE SPECIAL EVENTS!

Tickets and info @ [www.chagrinhunterjumperclassic.org/spectator-fun/](http://www.chagrinhunterjumperclassic.org/spectator-fun/) or at the Welcome Tent

Wed. – July 5, 5:00 p.m. <i>Rain Date: July 9</i>	<b>“Stomping the Divots”</b> polo party & benefit supporting Leg Up for Cleveland’s Kids, an urban equestrian program and a charity of the Chagrin Valley PHA, and the Cleveland Mounted Unit. Sponsored by the <b>Rose Family Foundation</b> and other generous benefactors.
Thurs. – Sat., July 6 – 8	Schneider Saddlery Opening Week Horse Show
Friday, July 7	\$3,500 <b>C Jarvis / Assured Partners</b> Mini Hunter Derby (after 4 p.m.)
Saturday, July 8	\$5,000 <b>Mercedes-Benz of Willoughby   Volvo of Willoughby-Leikin Motor</b> Mini Prix
Monday, July 10	Riders with Disabilities Horse Show, 10 a.m. – 2 p.m.
Tues. – Sun., July 11 – 16	USEF Premier Hunter & Jumper 4* Show
Tues. July 11	Complimentary <b>Sunset Yoga Session for Exhibitors</b> , 5:30 – 6:45 p.m. at Chalet near Rt. 87
Wed., July 12	<b>“Ride Upon Your Mystery Ship” Exhibitor Party &amp; Historic Farm Tour in the Euclid Beach Rocket Ship Car</b> sponsored by <b>Tyler-Stone Wealth Management, LLC</b> at Hillbrook Club, 6 – 8:30 p.m. Casual attire.
Thurs., July 13	Rider and groom appreciation fun. After 4:30 p.m.
Friday, July 14	\$10,000 Welcome Stake presented by <b>Wolf Creek Equestrian Center &amp; the Shaughnessy Family</b> <b>The Classic Flea:</b> a local artisan and farm market, 4 – 7 p.m. <b>“Bits &amp; Leashes”</b> benefiting Geauga Humane Society’s Rescue Village & Chagrin Hunter Jumper Classic Charities at 5:30 p.m. during the <b>Deacon’s &amp; RAM Truck Horse &amp; Hound Relay Exhibition Class</b> presented by <b>Gaugu Feed &amp; Grain Supply.</b>
Saturday, July 15	Family Day, 10 a.m. – 2 p.m.
Sunday, July 16	Live Broadcast: “Inside the Great Outdoors” segment sponsored by <b>RAM Truck &amp; Deacons</b> \$5,000 USHJA National Hunter Derby sponsored by <b>Ohio CAT</b> \$10,000 Billie H. Steffee Future Hunter Stake 52 <sup>nd</sup> Cleveland Grand Prix Opening Festivities 1 p.m. 52 <sup>nd</sup> Cleveland Grand Prix 2:30 p.m.

\*WE ANTICIPATE ADDING EVENTS. PLEASE CHECK WEBSITE OFTEN FOR UPDATES!

ALL HORSE SHOW TIMES ARE APPROXIMATE WITH THE EXCEPTION OF  
THE CLEVELAND GRAND PRIX START TIME.\*



## 2017 Chagrin Valley Chamber of Commerce Tack Room & Stabling Area Award



- 1<sup>st</sup> Prize \$450** + Equestrian Membership to Chagrin Valley Chamber of Commerce  
**2<sup>nd</sup> Prize \$200** + Equestrian Membership to Chagrin Valley Chamber of Commerce  
**3<sup>rd</sup> Prize \$100** + Equestrian Membership to Chagrin Valley Chamber of Commerce



Tack rooms and stabling areas are judged by a panel of spotters on creativity, aesthetics and suitability during the 11-days. Awards are presented at the Derby Dinner before the \$20,000 USHJA International Hunter Derby on Saturday, July 15.



When you think of beautification, turn to your CVCC partners: Breezewood Gardens; Chagrin Falls Architectural & Antiques; Chagrin Pet, Garden & Power Equipment; Earthstone Property Services; Exscape Designs, LLC; Hemlock Landscapes, Inc.; Impullitti Landscaping; Ironwood Landscape, Inc.; J.F.D. Landscapes, Inc.; Lowe's Greenhouse; Nowac Landscaping, Inc.; Ohio Valley Group, Inc.; Patio Deck and Hearth Shop; The Pattie Group, Inc.; Cingel Landscape & Design, Inc.; AQUA DOC Lake & Pond Management Inc.; and Cawrse & Associates, Inc. Visit [www.cvcc.org](http://www.cvcc.org) for contact information.



**Barn owners, trainers, stable managers and equestrian-related businesses: Reap the benefits of a Chamber of Commerce membership by joining at the Equestrian level.**

- Attend Pop Up Workshops on business skills such as: marketing, financial planning, computer software, etc.
- Attend Breakfast and Lunch educational events with speakers geared towards small business owners.
- Your business listed in the Chamber business directory online and in the Chagrin Valley Magazine directory mailed to over 15,000 Chagrin Valley Times subscribers.
- Access to over 500 small business owners with expertise and services to help you and your business.
- Take advantage of advertising opportunities and special member to member discounts available only to Chamber members.
- All for annual dues of \$150.00



**Contact membership coordinator Helen Kuznik**

Email: [hkuznik@cvcc.org](mailto:hkuznik@cvcc.org)

Phone: 440-247-6607

Or visit [www.cvcc.org](http://www.cvcc.org) for more information.

# Chagrin Valley Hunter Jumper Classic

## DIRECTIONS

**From I-271 / Beachwood** - Take Chagrin Blvd. East to Lander Circle and continue on Chagrin Blvd. East. Turn left onto River Road. Cleveland Metroparks (South Chagrin Reservation) Polo Field will be on the right. Trucks and exhibitors **MUST** use the show grounds entrance off of River Road.

### GPS & SHIPPING ADDRESS

**THIS ADDRESS IS ONLY GOOD DURING THE HORSE SHOW  
ONLY FED EX & UPS CAN BE SHIPPED, NO USPS**

Chagrin Hunter Jumper Classic  
Cleveland Metroparks Polo Field  
3841 Chagrin River Road  
Moreland Hills, OH 44022

### CAMPER ACCOMMODATIONS

- C1 Punderson State Park  
440-564-5465
- C2 Roundup Lake RV Resort  
330-562-9100
- C3 Silverhorn Campground  
330-562-5863

**THERE WILL BE NO CAMPERS  
ON THE SHOWGROUNDS.  
CAMPERS WILL NEED TO MAKE  
ARRANGEMENTS AT LOCAL CAMP  
GROUNDS**

- 1 **Hotel Indigo Beachwood**  
216-454-8000
- 1 **Home2 Suites Beachwood**  
216-755-7310
- 1 **Clarion Hotel Beachwood**  
216-831-5150
- 1 aLoft Beachwood  
216-595-0900
- 1 Hilton Beachwood  
216-464-0871
- 1 Embassy Suites Beachwood  
216-765-8066
- 1 Radisson Beachwood  
216-360-7341
- 1 Residence Inn Beachwood  
216-831-3030
- 1 Marriot Warrensville Hts.  
216-378-9191
- 2 Extended Stay American  
Beachwood 216-595-9951
- 2 Homestead Beachwood  
216-896-5555
- 2 Hampton Inn Beachwood  
216-831-3735
- 2 Super 8 Beachwood  
216-831-7200
- 2 Courtyard by Marriott Beachwood  
216-765-1900
- 2 Fairfield Inn & Suites Beachwood  
216-831-3300
- 3 The Inn of Chagrin Falls  
440-247-1200
- 8 Hampton Inn Solon  
440-542-0400
- Springhill Suites  
440-564-9144
- 9 Punderson Manor House  
440-564-9144



### Partner Hotels of the CVHJC – Atlantic Hospitality

Home2 Suites Beachwood 216-755-7310 / Clarion Hotel Beachwood 216-831-5150 / Hotel Indigo Beachwood 216-454-8000



ATLANTIC  
HOSPITALITY

OFFICIAL HOTEL GROUP

*for the*

2017



**Chagrin Hunter  
Jumper Classic**

Home of North America's First Grand Prix



3589 Park East Drive  
216.755.7310



26300 Chagrin Boulevard  
216.831.5150



3581 Park East Drive  
216.454.8000

Atlantic Hospitality is a locally owned and operated business. Properties located in Beachwood, OH 44122.  
Right off of I-271, on the corner of Park East Drive & Chagrin Boulevard.

# PARTNER HOTELS OF THE CHAGRIN HUNTER JUMPER CLASSIC

**Hotel Indigo, Beachwood, OH: 877-859-5095 Code HJC**



For more information or assistance with hotel booking contact:  
Lynne Pollack  
Chagrin Hunter Jumper Classic Show Concierge  
440-759-1969 \* [lynne.pollack@gmail.com](mailto:lynne.pollack@gmail.com)

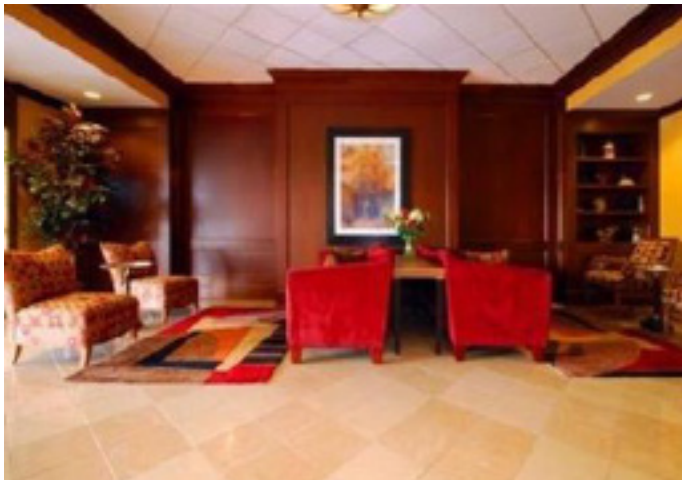
**3581 Park East Dr., Beachwood, OH 44122**

**Home2Suites, Beachwood, OH: 216-755-7310 Code CVH**



**3589 Park East Dr., Beachwood, OH 44122**

**Clarion Hotel Beachwood: Guests should call 216-831-5150 directly to book rooms. Please tell them you are Chagrin Hunter Jumper Classic exhibitors.**



**26300 Chagrin Blvd., Beachwood, OH 44122**

# GENERAL RULES AND REGULATIONS

## USEF

"Every class offered herein which is covered by the rules and specifications of the current Federation Rule Book, will be conducted and judged in accordance therewith."

**LIFE, SENIOR ACTIVE, AND JUNIOR ACTIVE MEMBERS SHALL BE ELIGIBLE TO PARTICIPATE IN ALL CLASSES AT REGULAR COMPETITIONS, EVENTING COMPETITIONS AT THE PRELIMINARY LEVEL OR ABOVE, AND COMBINED DRIVING COMPETITIONS AT THE ADVANCED LEVEL, DRESSAGE, REINING AND VAULTING COMPETITIONS AND ENDURANCE RIDES. A NON-MEMBER MAY PARTICIPATE AS A HANDLER, RIDER, DRIVER, OWNER, LESSEE, AGENT, COACH OR TRAINER AT REGULAR COMPETITIONS, EVENTING COMPETITIONS, DRESSAGE COMPETITIONS, REINING COMPETITIONS AND COMBINED DRIVING COMPETITIONS UPON PAYMENT OF A \$30 SHOW PASS. PARTICIPANTS IN THE FOLLOWING CLASSES ARE EXEMPTED FROM THE REQUIREMENTS OF THIS RULE: 1) LEADLINE; 2) EXHIBITIONS; 3) GAMES AND RACES; 4) CLASSES FOR 4-H MEMBERS; 5) WALK-TROT AND ACADEMY CLASSES (ACADEMY CLASSES ARE CLASSES LIMITED TO HORSES USED REGULARLY IN A LESSON PROGRAM); 6) USDF INTRODUCTORY LEVELTESTS, PAS DE DEUX AND QUADRILLE CLASSES; 7) NRHA ENDORSED REINING COMPETITIONS 8.) OPPORTUNITY CLASSES, 9) OF OTHER NATIONS WHO HAVE PROOF, IN ENGLISH, OF CURRENT MEMBERSHIP IN GOOD STANDING OF THEIR OWN NATIONAL FEDERATION 10) USEA BEGINNER NOVICE DIVISION, 11) ASSISTANT HANDLERS IN DRESSAGE SPORT HORSE BREEDING CLASSES.**

## ENTRIES

- The 2017 Chagrin Valley Hunter/Jumper Classic will use the Horse Shows Online platform to accept entries for this competition. Exhibitors will be able to enter the show electronically as well as view their bills online.  
**Competitors are encouraged to submit their show entries online at <http://horseshowsonline.com/onlineentry.aspx>**  
Mail Entries to: CVHJC c/o 9129 Old Meadow Drive, Chagrin Falls, OH 44023 - Faxed Entries will NOT be accepted.
- Rated Show July 11-16, 2017 - Nominations, hunter entry fees, equitation entry fees and stall reservations must be POSTMARKED BY MIDNIGHT JUNE 19, 2017. Entries postmarked after that date may be accepted if stalls are available and late fees will be charged. Late entries MAY be accepted at a one-time late fee of \$25. An Office Fee of \$50 and a Grounds Fee of \$50 will be charged PER ENTRY.
- Opening Weekend show July 6-8, 2017, Hunter, Jumper and Equitation entry fees must be POSTMARKED BY MIDNIGHT JUNE 19, 2017. Post entries for Opening Weekend will be accepted after that time and late fees will be charged. Late entries will be accepted at a one-time fee of \$20. An Office Fee of \$20 and a Grounds Fee of \$25 will be charged PER ENTRY.
- NO stalls will be reserved without receipt of stall fees. There will be a minimum of 30 Grand Prix horse stalls available with the remaining 600 stalls available to non-grand prix showing horses.
- NO entries will be processed for acceptance, unless accompanied by a completed entry form AND payment in full for stalls and nomination fees for each horse entered. Open checks WILL NOT be accepted for stall & nomination fees. An open check will be required in the Show Office for additional entries and fees before ANY horse numbers may be picked up.

- Separate checks or credit card payment will be required for Opening Weekend entries. All Entry accounts must be PAID IN FULL by the end of each horse show; Opening Weekend & Rated Show.
- Management reserve the right to charge a Non-Showing fee of \$125 to those entries stabled on the show grounds that have not accumulated any entry fees.
- Management reserves the right of declining to accept any entry, and to return any entrance fees before the opening of the show, without being liable for compensation. Management reserves the power to prohibit any person attending or showing a horse and to remove any groom or horse from the show without being liable for compensation. Management reserves the right to limit entries in any class, section or division.
- Nominations for all Jumper Sections and classes close June 19, 2017, unless otherwise noted. Post nominations may be accepted after the closing date at the regular nominating fee PLUS a one-time late charge of \$25 unless otherwise stated.
- Declarations to show horses which have been nominated for the Jumper Division must be made PRIOR TO THE CLOSE OF THE SHOW OF- FICE the day BEFORE the class(es) are held unless otherwise specified
- Horses shown in classes in which they have not been entered will be required to pay a DOUBLE ENTRY FEE in those classes.
- Entry blanks will be accepted ONLY when signed by the owner or his authorized agent, trainer, and rider and accompanied by a check for NOMINATION, HUNTER, EQUITATION AND STABLING FEES. Acknowledgements will not be mailed.
- Each entry form must give the OWNER'S USEF/USHJA Membership Number, proper mailing address, telephone number and either a Social Security Number or Federal Employer's Identification. All USEF/USHJA Membership cards or a copy of same must be shown before numbers are released. Failure to present a card or verify membership will result in a \$30 per organization non-refundable show pass fee.
- Exhibitors shall be held responsible for all entry and nomination fees of all horses entered or nominated by them or their agents even though payment of these fees is not submitted along with your entry form

## SCRATCHES

- Horses entered in all Hunter Sections and horses/riders in Equitation classes may be scratched in the Horse Show Office on the Official form and must be received prior to the start of the first class entered in. Any other method WILL NOT be considered valid. Once a class begins, it may not be scratched, except for a Vet Scratch. If a Vet Scratch applies, the horse must be scratched on the same day of the class(es) scratched in the Horse Show Office on the Official Form and the Official Vet's Certificate must be received in the Show Office by close of business that day.
- SHOW SCRATCH - A horse that is scratched from a show will pay the \$25 scratch fee.
- SHOW SWAP - A horse that has been entered can be swapped for another showing horse for a \$25 fee.
- In all Jumper Classes in which a declaration to show is made, once the class has started, the entry fee as stated in the Prize List will be charged whether the horse is shown or not. In order to scratch a horse from classes declared, an Official Form must be filled out and presented in the Horse Show Office BEFORE the start of the class being scratched. Upon timely receipt of the scratch sheet, the total entry fee will be credited.
- NO PREPAID NOMINATION FEES WILL BE REFUNDED.

## STABLING

- Stalls will be of a 10x10 temporary variety, vinyl, housed in big tents.
- Stall fees are per stall \$180 for Opening Week and \$250 for Classic Rated Week. Initial bedding is NOT provided. Stall doors will be provided. Add \$25 for each rated stall reserved after June 19, 2017, the closing date of entries.
- Opening Week July 6-8, 2017; Stalls will be available July 5<sup>th</sup> at noon. All stalls must be vacated by July 9<sup>th</sup> at 9 a.m.

# GENERAL RULES AND REGULATIONS

- CVHJC July 11-16, 2017; Stalls will be available July 9<sup>th</sup> at 4 p.m. All stalls must be vacated by July 17, at 11 a.m.
- Horses will be admitted on the show grounds only between the hours of 9 a.m. and 5 p.m.
- **YOU MAY NOT PUT HOLES IN STALL WALLS OR BEND BACK STALL FRONTS. ANY DAMAGE TO STALLS WILL BE BILLED TO YOUR HORSE SHOW ACCOUNT**
- **YOU ARE ONLY TO USE YOUR ASSIGNED STALL. UNAUTHORIZED USE OF STALL WILL INCUR DOUBLE STALL FEES AND/OR SUSPENSION FROM THE REMAINDER OF THE HORSE SHOW.**
- Orders for feed and bedding can be placed ahead of time with the Show Office and is encouraged. Once an order is placed and delivered, there can be **NO REFUNDS** on the order.
- Each horse stabled on the show grounds will be charged a fee for overnight horse watch. This fee covers each stabled horse and is mandatory. Each rated show fee is \$10.
- Management reserves the right to limit the number of Tack, Grooming, Junk or Non-Showing horse stalls. Trainers with fewer than 3 showing horses may **NOT** order tack, grooming or junk stalls. (407) 619-0891
- **STALL RESERVATIONS WILL NOT BE ACCEPTED UNLESS FULL PAYMENT IS SENT WITH THE RESERVATION FORM.**
- Unless special arrangements are made with Management, stalls must be vacated no later than 12 noon the day following the conclusion of each show.
- **STALL FEES ARE NOT REFUNDABLE** under any circumstances and if not prepaid, will still be charged.
- Vans and Trailers may enter the grounds and stable area to **UNLOAD** and must proceed to **VAN PARKING**. Directions available in the horse show office.

## PLEASE TAKE NOTE

- As per GR801.2 it is **COMPULSORY** for **ALL PERSONS** at Federation licensed hunter, jumper or hunter/jumper competitions when mounted **ANYWHERE** on the competition grounds to wear properly fastened protective headgear which meets or exceeds ASTM/SEI standards for equestrian use and carries the SEI TAG. It must be properly fitted with harness secured.
- Prize money won will be applied to each exhibitor's entry and will be available in the show office at the conclusion of each exhibitor's showing. Credits will be mailed to exhibitors within 30 days after the conclusion of the show.
- Veterinary duties along with their contact phone number will be posted in the show office and outside the show office trailer.
- **SHOW OFFICE HOURS**; Show days – Opens one hour before the start of the first class and **CLOSES** immediately following the last class or 5:00 p.m. whichever is later. Non-Show days – 9:00 a.m. – 5:00 p.m.
- Exhibitor accounts will be processed and numbers given out in the show office the day preceding the show.
- **SHOW OFFICE TACK STALL AND FEED/BEDDING SPLITS MUST BE IN THE OFFICE BY FRIDAY NOON.**
- **PARKING PASSES** are required and will be given out with the entry numbers.
- **NO PARKING IN THE BARN AREA.** Only drop off and pick up are allowed.
- A fine of \$35 plus collection fees will be made for all non-negotiable checks. **FOREIGN COMPETITORS** must pay in **U.S. FUNDS**.
- **IRS 1099 Misc. Income Forms** will be issued to the owner as listed on the entry form. Prize monies will only be paid out when a **VALID FEDERAL ID OR SOCIAL SECURITY NUMBER** is provided.
- Check out – a fee of \$25 will be assessed to those exhibitor accounts that are not settled up by the end of the horse show.
- Non-Showing horses will be assessed a fee of \$125 in addition to stabling charges.
- No horses or ponies will be allowed in any class (hunter, Jumper or Equitation) "hors concours".
- Competitors competing without a number or with an incorrect number may be refused an award at Management's discretion.

## CREDENTIALS

- **NO NUMBERS WILL BE RELEASED UNTIL PROPER CREDENTIALS AND ALL SIGNATURES ARE IN ORDER.**

- **ALL EXHIBITORS IN THE Pony and Junior Hunter sections must present their measurement cards at the Show Office BEFORE NUMBERS MAY BE PICKED UP.** To speed up processing, please send a copy of your card with your entry blank. Ponies and junior hunters that do not possess a current measurement card will be measured. Time and place of measurement will be announced.
- **ALL EXHIBITORS** in the Amateur Owner & Adult Amateur sections must present their amateur certification at the Show Office **BEFORE** numbers may be picked up. To speed processing, please send a copy of your card with your entry blank. **ALL AMATEURS MUST LIST THEIR AGE ON THE ENTRY BLANK.**

## HUNTERS

- Management reserves the right to limit the courtesy circle in Hunter and Equitation classes in accordance with USEF Rule HU120.

## SCHOOLING

- Horses will be allowed in the show rings only at such hours as announced by Management.

## LONGEING

- Longeing will be in designated areas and ends at 7:00 a.m.

## JUMP ORDER

- A rotating jumping order will be established for all classes over fences. All horses must be ridden in the posted order. Riders, trainers who have conflicts due to classes in more than one ring at the same time should see the starter so that necessary adjustments can be made. **AT NO TIME WILL RINGS BE HELD UP FOR MORE THAN THREE MINUTES DUE TO CONFLICTS.** In all classes offering \$5,000 or more, a starting order will be drawn as required by JP112.

## COURSES

- In all jumper classes, courses may consist of any combination of the following: brush gates, oxers, post and rails, water, Liverpool ditch, wall bank, panels coop. In all hunter classes, fences will simulate fences found in the hunting field such as: brush, wall, in and out, oxe post and rails, gate, aiken bank and panels.

## RING SIZES AND FOOTING

- Jumper Ring – 300' x 200' – Ebb and Flow System with Sand and Textile
- Hunter Ring I – 150' x 290' Limestone / Sand Mix
- Hunter Ring II – 120' x 290' Limestone / Sand Mix
- Schooling Areas – Limestone / Sand Mix

## ATTIRE

- Proper Attire required.
- Formal Attire required in all classics and where specified.

## SHOWGROUND RULES

- **ALL DOGS MUST BE LEASHED AT ALL TIMES WHILE ON THE SHOWGROUNDS.** Owners of all loose dogs will be fined a \$50 fee which will be added to the owner's show bill. For a second offense, a fine of \$100 additional will be added to the owner's show bill. Third offense, the owner may be barred from showing and be required to leave the showgrounds. We find this extreme action necessary due to the dog agility event in order to protect our Exhibitors from injury and to protect their financial investment. **THIS RULE WILL BE STRICTLY ENFORCED.**
- **WASHING HORSES ANYWHERE OTHER THAN THE DESIGNATED WASH AREAS WILL INCUR A FINE OF \$500.00 AND/OR SUSPENSION FROM THE REMAINDER OF THE SHOW.**
- Exhibitors and their personnel are asked to abide by our no smoking policy in the stable areas and dispose of medical waste in designated medical waste disposal containers (not general trash or manure). You will be subject to fines for these violations.

# GENERAL RULES AND REGULATIONS

- **MEDICAL WASTE CONTAINERS** will be provided in the stable areas. All exhibitors and their agents are responsible for the proper disposal of this waste.
- **MOTORIZED VEHICLES** – Minors who do not have a valid driver's license which allows them to operate a motorized vehicle in the state in which they reside will not be permitted to operate a motorized vehicle of any kind, including, but not limited to, golf carts, motorcycles, scooters, or farm utility vehicles on the competition grounds of licensed competitions. Minors who have a valid temporary license may operate the above described motorized vehicles as long as they are accompanied by an adult with a valid driver's license. The parent(s), legal guardian(s) or individual who signs the entry blank as a parent or guardian of a minor operating a motorized vehicle in violation of this rule are solely responsible for any damages, claims, losses or actions resulting from that operation. Violations of this rule will be cause for sanctions against the parent(s), guardians(s), and/or trainer(s) who are responsible for the child committing the offense. Penalties may include exclusion of the child, parents, guardian(s) and/or trainer(s) from the competition grounds for the remainder of the competition and charges being filed against any of the above individuals in accordance with Chapter 6. Wheelchairs and other mobility assistance devices for individuals with disabilities are exempt from this rule.
- All extension cords must be 3 wire grounded, heavy duty (12 gauge or higher).

## **FARRIER**

- No farrier other than the official horse show farrier will be permitted to shoe horses on the horse show grounds without the express permission of show management. Exhibitors desiring the services of a farrier other than the official horse show farrier must request permission for that farrier in the show office.
- A separate area will be made available for visiting farriers that have been granted permission to be on the show grounds.

## **POLING**

- **NO POLING OR USE OF OFFSETS WILL BE PERMITTED AT ANYTIME.**

## **EQUINE VACCINATION RULE**

- At Competition Management's request, horses entering the grounds must be accompanied by documentation of Equine Influenza Virus and Equine Herpes Virus (Rhinopneumonitis) vaccinations within six months prior to entering the stables. Horses not in compliance with this rule may be required to leave the competition grounds upon request by Competition Management. Documentation should consist of one of the following methods mentioned below. The frequency of vaccine administration should be per the vaccine manufacturers' or veterinarians' recommendations. It is recommended that vaccines are administered by or under the direction of a veterinarian.
- In the case of vaccines administered by a veterinarian, the exhibitor, upon request by Competition Management, must provide documentation from the veterinarian documenting that the horse in question received the vaccinations: name of the vaccines and date of vaccine administration.
- In the case of vaccines administered by a person other than a veterinarian, the exhibitor, upon request by Competition Management, must provide a receipt of the vaccine purchase which is signed by the owner, or agent with care, custody and control of the horse: name, serial number and expiration date of the vaccine; and date of vaccine administration.
- In the case of a horse that is unable to receive either of the vaccinations due to a history of adverse reactions, the exhibitor, upon request by Competition Management, must provide a letter from the veterinarian on official letterhead stating that the horse in question cannot be vaccinated due to medical concerns and a log of temperatures taken twice daily for the seven days prior to entering the competition grounds. These horses must also have their temperature taken and logged twice daily while on the competition grounds. The log of temperatures should be provided to the Competition Management, steward or technical delegate when requested.

## **MANAGEMENT**

- Management reserves the right to cancel or combine classes if insufficient entries warrant. Management reserves the right to refuse any entry. Management reserves the right to vary the time schedule. If classes and entries warrant, classes may begin earlier than the listed starting time.
- Should any question arise that is not provided for in the rules, the same shall be referred to the Show Committee WHOSE DECISION SHALL BE FINAL.
- Chagrin Valley PHA Horse Shows, Inc., the OPHA, the Cleveland Metroparks, Chagrin Valley, their employees, officials, board and committee members and agents will not be responsible for any accident or loss which may occur to any exhibitor spectator, guest, rider, groom, attendant or other employee, animal or equipment at the show. **THIS SHALL BE A CODITION OF ENTRY TO THIS SHOW OR SHOW GROUNDS.**
- This Horse Show will stay current with USEF rule changes. Changes will be posted in the show office.

## 2017 OPENING WEEK SCHEDULE

### THURSDAY

#### RING I - 8 A.M.

402	Schooling Hunter 2'3"
1, 2	Baby Green Hunter 2'3" O/F
3	Baby Green Hunter U/S
403	Schooling Hunter 2'6
7, 8	Special Hunter 2'6 O/F
4, 5	Very Green Hunter O/F 2'6
9	Special Hunter U/S
6	Very Green Hunter U/S
13, 14	Low Hunter 3' O/F
16, 17	Green Hunter O/F (3' or 3'3)
15	Low Hunter U/S
18	Green Hunter (3' or 3'3) U/S
22, 23	Performance Hunter O/F (3'3 or 3'6)
24	Performance Hunter U/S
19, 20	Green Hunter (3'6 or 3'9) O/F
21	Green Working Hunter (3'6 or 3'9) U/S

#### JUMPER RING - 8 A.M.

301	Beginner Jumper .70m-.75m, II, 2(b)
215	Open Equitation 2'6" O/F
303	Training Jumper .85m - .90m, II, 2(b)
311	Inter Child/Adult .85m-.90m, II 2(b)
312	Inter Child/Adult .85m-.90m, IV Sec 1
219	Open Equitation 2'9" - 3' O/F
307	Low Schooling Jumper 1.0m, II
314	Low Child/Adult Jumper 1.0m, II, 2(b)
315	Low Child/Adult Jumper 1.0m, IV Sec 1
222	Open Equitation 3'3" O/F
305	High Schooling Jumper 1.10m, II
317	Child/Adult Jumper, 1.10m, II, 2(b)
318	Child/Adult Jumper, 1.10m, II Sec 1
225	Open Equitation 3'6" O/F
309	Open Modified Jumper 1.20m, II 2(b)
320	Junior/Amateur Jumper 1.20m, II,2(b)

### FRIDAY

#### RING I - 8 A.M.

404	Schooling Hunter 2'6
69, 70	Low Adult Hunter 2'6 O/F
407	Schooling Hunter 3'
65, 66	Childrens Hunter 3'O/F
61, 62	Adult Amateur Hunter 3' O/F
409	Schooling Hunter 3'3
33, 34	Junior Hunter 3'3 O/F
25, 26	Amateur Owner 3'3 O/F
411	Schooling Hunter 3'6
37, 38	Junior Hunter 3'6 O/F
29, 30	Amateur Owner Hunter 3'6 O/F
601	<b>2'6-3' \$3,500 Mini Hunter Derby</b>

### FRIDAY

#### RING II - 8 A.M.

405	Schooling Hunter 2'6
10, 11	Non-Pro 2'6 O/F
12	Non-Pro U/S
73, 74	Low Childrens Hunter 2'6 O/F
400	Schooling Hunter 2'-2'6
57, 58	Childrens Hunter Pony O/F 2',2'6
413	Schooling Pony 2'3,2'6,2'9 Open
53, 54	Green Pony Hunter O/F 2'3,2'6,2'9
41, 42	Small Pony Hunter O/F 2'3
45, 46	Medium Pony Hunter O/F 2'6
49, 50	Large Pony Hunter O/F 2'9-3'
415	Short Stirrup Schooling 2'
77, 78	Short Stirrup O/F 2'
116	Novice Rider Warmup 2'
118,119	Novice Rider O/F 2'
121	Novice Rider U/S
111	Limit Rider Warmup 18"-2'
112, 113	Limit Rider O/F 18"-2'
114	Limit Rider U/S
115	Limit Rider Equitation on the Flat

#### JUMPER RING - 8 A.M.

302	Beginner Jumper .70m-.75m, II, 2.1
217	Open Equitation 2'6" on the Flat
216	Open Equitation 2'6" O/F
304	Training .85-.90m IV,2.1
313	Inter. Ch/Ad .85-.90m IV,2.1
221	Open Equitation 2'9"-3' on the Flat
220	Open Equitation 2'9"-3' O/F
308	Low Schooling 1.0m II
316	Low Children/Adult Jumper 1.0m, IV, Sec 1
224	Open Equitation 3'3" on the Flat
223	Open Equitation 3'3" O/F
306	High Schooling 1.10m II
319	Child/Adult Jumper, 1.10m, II, Sec 1
227	Open Equitation 3'6" on the Flat
226	Open Equitation 3'6" O/F
310	Open Modified Jumper, 1.20m, II, Sec 1
321	Junior/Amateur Jumper, 1.20m, II, Sec 1

### SATURDAY

#### RING I - 8 A.M.

406	Schooling Hunter 2'6'
75	Low Child Hunter 2'6 O/F
204	Low Child Equitation 2'6 O/F
76	Low Child Hunter U/S
203	Low Child Equitation on the Flat
408	Schooling Hunter 2'6
71	Low Adult Hunter 2'6 O/F
202	Low Adult Equitation 2'6 O/F
72	Low Adult Hunter U/S
201	Low Adult Equitation on the Flat
409	Schooling Hunter 3'
67	Childrens Hunter 3' O/F
68	Childrens Hunter U/S
207	Childrens Equitation on the Flat
417	Schooling Hunter 3'
63	Adult Amateur Hunter 3' O/F
64	Adult Amateur Hunter U/S
205	Adult Amateur Equitation on the Flat
410	Schooling Hunter 3'3
35	Junior Hunter 3'3 O/F
36	Junior Hunter 3'3 U/S
209	17 & Under Eq. on the Flat

### SATURDAY

#### RING I - cont'd

27	Amateur Owner Hunter 3'3 O/F
28	Amateur Owner Hunter 3'3 U/S
412	Schooling Hunter 3'6
39	Junior Hunter 3'6 O/F
40	Junior Hunter 3'6 U/S
31	Amateur Owner Hunter 3'6 O/F
32	Amateur Owner Hunter 3'6 U/S

#### RING II - 8 A.M.

401	Schooling Hunter 2'-2'6
59	Childrens Hunter Pony O/F 2', 2'6
60	Childrens Hunter Pony U/S
213	Childrens Pony Equitation on the Flat
414	Pony Schooling 2',2'3,2'6,2'9 (Open)
55	Green Pony Hunter O/F 2'3,2'6,2'9
56	Green Pony Hunter U/S
212	Dick Gascoigne Memorial Pony Medal
43*	Small Pony Hunter O/F 2'3
44	Small Pony Hunter U/S
47*	Medium Pony Hunter 2'6
48	Medium Pony Hunter U/S
51*	Large Pony Hunter 2'9-3'
52	Large Pony Hunter U/S
211	Pony Equitation on the Flat
602	Pony Classic (2 <sup>nd</sup> Round)
416	Short Stirrup Schooling 2
79	Short Stirrup Hunter O/F 2'
80	Short Stirrup Hunter U/S
214	Short Stirrup Equitation on the Flat
117	Novice Rider Warm-Up 2'
120	Novice Rider O/F 2'
122	Novice Rider Equitation on the Flat
101	Walk Trot Cross Rails Warmup
102, 103	Walk Trot Cross Rails
104	Walk Trot Crossrails U/S
105	Walk Trot Crossrails Equitation on the Flat
106	W/T/C Cross Rails Warmup
107, 108	W/T/C Cross Rails
109	W/T/C Cross Rails U/S
110	W/T/C Cross Rails Equitation on the Flat

#### JUMPER RING - 8 A.M.

501	Beginner Jumper Classic .70m-.75m, II 2(b)
218	2'6" Equitation Medal
502	Inter Child/Adult Jumper Classic .90m, II 2(b)
208	Fox Smith Memorial Medal 3'
206	NARHA Adult Equitation 3'
503	Low Child/Adult Jumper Classic, 1.0m, II 2(b)
504	Child/Adult Jumper Classic 1.10m. II 2(b)
210	OPHA Hunter Seat Medal 3'6
505	Junior/Amateur Jumper Classic, 1.20m, II 2(b)
123	Leadline
506	<b>\$5,000 Mini Prix 1.20m, II 2(b)</b>

**\*First round Classic**



# 2017 CHAGRIN HUNTER JUMPER CLASSIC

## TENTATIVE SCHEDULE

### MONDAY

#### RING I & II

TICKETED WARM-UP'S \$25 PER ROUND

### TUESDAY

#### JUMPER RING - 8:00 a.m.

404 Low Schooling Jumper 1.0m II  
 447 Take 2 TB Jumper 1.0m II, 2b  
 448 Take 2 TB Jumper 1.0m II, 2.1  
 311 14 & Under Equitation Flat  
 312 14 & Under Equitation 2'6 O/F  
 409 Medium Schooling Jumper 1.10m II, 2b  
 313 15-17 Equitation Flat  
 314 15-17 Equitation 3'6 O/F  
 401 Open Schooling Jumper .85-.90M II  
 414 Int. Children's Jumper .85-.90m II, 2b  
 417 Int. Adult Jumper .85-.90m II, 2b  
 609 Pro Am

#### RING II - 8 A.M.

290 Open 2'6 Warm Up  
 173, 174 USHJA Hunter 3'  
 169, 170 USHJA Hunter 2'9  
 165, 166 USHJA Hunter 2'6  
 161, 162 USHJA Hunter 2'3  
 157, 158 USHJA Hunter 2'  
 291 Open Pony Hunter Warm Up 2' & 2'6  
 147, 148 Children's Pony Hunter Sm/Med O/F 2'  
 151 Children's Pony Hunter Sm/Med U/S  
 152, 153 Children's Pony Hunter Lg O/F 2'6  
 156 Children's Pony Hunter Lg U/S

### WEDNESDAY

#### JUMPER RING - 8 A.M.

405 Low Schooling Jumper 1.0m II  
 449 Take 2 TB Jumper 1.0M, 2.1  
 411 High Schooling Jumper 1.20m II  
 450 1.25m Jumper II, 2b  
 452 1.30m Jumper II, 2b  
 410 Medium Schooling Jumper 1.10m II  
 426 Children's Jumper 1.10m II, 2b  
 429 Adult Jumper 1.10m II, 2b  
 421 Low Children's Jumper 1.0m, II, 2b  
 424 Low Adult Jumper 1.0m II, 2b  
 402 Open Schooling Jumper .85-.90m II  
 415 Intermediate Child .85-.90m II, 2.1  
 418 Intermediate Adult .85-.90m II, 2.1  
 612 \$1500 Gambler's Choice

#### RING I - 8 A.M.

32 Green Conf Model  
 16 High Performance Conf Model  
 292 Open Warm Up (Time Permitting)  
 43,44 Green Hunter 3' O/F  
 193, 194 Take 2 TB Hunter O/F 3'  
 47 Green Hunter 3' U/S  
 54, 55 Young Hunter 5 Yr & Under 3' O/F  
 56 Young Hunter 5 Yr & Under U/S  
 51, 52 Young Hunter 6 Yr & Under 3'3 O/F  
 53 Young Hunter 6 Yr & Under U/S

### WEDNESDAY

#### RING I - (CONT'D)

38,39 Green Hunter 3'3 O/F  
 42 Green Hunter 3'3 U/S  
 33,34 Green Conf Hunter 3'6 O/F  
 37 Green Conf Hunter U/S  
 27,28 Green Hunter 3'6 O/F  
 31 Green Hunter 3'6 U/S  
 48,49 Young Hunter 7 Yr & Under 3'9 O/F  
 50 Young Hunter 7 Yr & Under U/S  
 22,23 Green Hunter 3'9 O/F  
 26 Green Hunter 3'9 U/S  
 17,18 High Perf Conf Hunter 3'9 O/F  
 21 High Perf Conf Hunter U/S  
 1, 2 High Perf Hunter 4' O/F  
 5 High Perf Hunter 4' U/S  
 6, 7 Performance Hunter 3'6 O/F  
 10 Performance Hunter 3'6 U/S  
 11,12 Performance Hunter 3'3 O/F  
 15 Performance Hunter 3'3 U/S  
 142, 143 Children's Hunter 15-17 O/F 3'  
 146 Children's Hunter 15-17 U/S

#### RING II - 8 A.M.

160 USHJA Hunter 2' U/S  
 293 Open Hunter Warmup (Time Permitting)  
 159 USHJA Hunter 2' O/F  
 149, 150 Children's Pony Hunter Sm/Med O/F 2'  
 164 USHJA Hunter 2'3 U/S  
 163 USHJA Hunter 2'3 O/F  
 168 USHJA Hunter 2'6 U/S  
 167 USHJA Hunter 2'6 O/F  
 154, 155 Children's Pony Hunter Lg O/F 2'6  
 172 USHJA Hunter 2'9 U/S  
 171 USHJA Hunter 2'9 O/F  
 176 USHJA Hunter 3' U/S  
 175 USHJA Hunter 3' O/F  
 137, 138 Children's Hunter 14 & Under O/F 3'  
 141 Children's Hunter 14 & Under U/S  
 329 THIS Children's Medal 3'  
 177, 178 Low Children's Hunter 2'6 O/F

#### FIRST AVAILABLE RING

207 Yearlings  
 208 Two Year Olds  
 209 Three Year Olds  
 210 Best Young Horse  
 211 Yearling Pony  
 212 Two Year Old Pony  
 213 Three Year Old Pony  
 214 Best Young Pony

### THURSDAY

#### JUMPER RING - 8 A.M.

406 Low Schooling Jumper 1.0m II  
 310 Jumper Seat Equitation 1.0m  
 327 WIHS Equitation (Jumper Phase)  
 325 Platinum Performance USEF Talent Search  
 412 High Schooling Jumper 1.20m II  
 432 Low 1.20, Jr/AO Jumper II, 2b  
 451 1.25m Jumper II, Sec 1  
 435 Medium 1.30m Jr/AO Jumper II, 2b  
 453 1.30m Jumper II, 2.1  
 438 High 1.40m Jr/AO Jumper II, 2.1  
 603 \$5,000 Open Jumper 1.35m Speed Stake III  
 403 Open Schooling Jumper .85-.90m II  
 416 Int. Children's Jumper .85-.90m II, 2.1  
 419 Int. Adult Jumper .85-.90m II, 2.1  
 420 Low Children's Jumper 1.0m II, 2.1  
 423 Low Adult Jumper 1.0m II, 2.1  
 427 Children's Jumper 1.10m II, 2.1  
 430 Adult Jumper 1.10m II, 2.1

#### RING I - 8 A.M.

294 Open Warm Up (Time Permitting)  
 45,46 Green Hunter 3' O/F  
 505 \$1,000 Green Hunter 3' Incentive  
 197 Take 2 TB Hunter U/S  
 195, 196 Take 2 TB Hunter O/F 3'  
 40,41 Green Hunter 3'3 O/F  
 504 \$1,000 Green Hunter 3'3 Incentive  
 35 Green Conf Hunter 3'6 O/F  
 36 Green Conf Handy Hunter 3'6 O/F  
 29 Green Hunter 3'6 O/F  
 30 Green Handy Hunter 3'6 O/F  
 24 Green Hunter 3'9 O/F  
 25 Green Handy Hunter 3'9 O/F  
 19 High Perform Conf Hunter 3'9 O/F  
 20 High Perform Conf Handy Hunter 3'9 O/F  
 3 High Perf Hunter 4' O/F  
 4 High Perform Handy Hunter 4' O/F  
 8 Performance Hunter 3'6 O/F  
 9 Performance Handy Hunter 3'6 O/F  
 13 Performance Hunter 3'3 O/F  
 14 Performance Handy Hunter 3'3 O/F  
 144, 145 Children's Hunter 15-17 O/F 3'

#### RING II - 8 A.M.

295 Open Warm Up (Time Permitting)  
 139, 140 Children's Hunter 14 & Under O/F 3'  
 317 Children's Equitation Flat  
 318 Children's Equitation O/F 3'  
 181 Low Children's Hunter 2'6 U/S  
 179, 180 Low Children's Hunter 2'6 O/F  
 182, 183 Low Adult Hunter 2'6 O/F  
 187, 188 Chagrin Open 2'6 Hunter O/F  
 189 Chagrin Open 2'6 Hunter U/S  
 190, 191 Baby Green Hunter 2'6 O/F  
 192 Baby Green Hunter U/S

# 2017 CHAGRIN HUNTER JUMPER CLASSIC

## TENTATIVE SCHEDULE

### FRIDAY

#### JUMPER RING - 8 A.M.

407 Low Schooling Jumper 1.0m II  
 441 5 Yr Old YJC 1.15m II  
 413 High Schooling Jumper 1.20m II  
 433 Low 1.20m Jr/AO Jumper II, 2.1  
 443 6 Yr Old YJC 1.25m II, 2.1  
 436 Medium 1.30m Jr/AO Jumper II, 2.1  
 454 1.30m Jumper II, 2.1  
 445 7 Yr. Old YJC 1.30m II, 2.1  
 455 1.35m Jumper II, 2.1  
 439 High 1.40m Jr/AO Jumper II, 2.1  
 602 \$10,000 Welcome Stake 1.40m II, 2b  
 428 Children's Jumper 1.10m II, 2.1  
 431 Adult Jumper 1.10m II, 2.1  
 613 Low Child/Adult Jumper Classic 1.0m II, 2b  
 702 Horse & Hound Relay Exhibition

#### RING I - 7:30 A.M.

296 Open Warm Up (Time Permitting)  
 57, 58 A/O Hunter 3'6 18-35 O/F  
 62, 63 A/O Hunter 3'6 36 & Over O/F  
 67, 68 A/O Hunter 3'3 18-35 O/F  
 72, 73 A/O Hunter 3'3 36 & Over O/F  
 77, 78 Small Junior 3'6 15 & Under O/F  
 82, 83 Small Junior 3'6 16-17 O/F  
 87, 88 Large Junior 3'6 15 & Under O/F  
 92, 93 Large Junior 3'6 16-17 O/F  
 97, 98 Junior Hunter 3'3 O/F  
 323 Pessoa USEF Hunter Seat Medal  
 326 WIHS Equitation Hunter Phase  
 WIHS Equitation Overall Presentation  
 330 Ariat Adult Medal  
 127, 128 Adult Amateur Hunter 18-35 O/F  
 132, 133 Adult Amateur Hunter 36 & Over O/F

#### RING II - 7:30 A.M.

328 WIHS Pony Equitation  
 112 Small Pony Hunter Conf O/F  
 113 Small Pony Handy Hunter O/F  
 105 Sm/Med Green Pony Hunter Conf O/F  
 102 Sm/Med Green Pony Hunter O/F  
 117 Medium Pony Hunter Conf O/F  
 118 Medium Pony Handy Hunter O/F  
 110 Large Green Pony Conf O/F  
 107 Large Green Pony O/F  
 122 Large Pony Conf Hunter O/F  
 123 Large Pony Handy Hunter O/F  
 319 Pony Equitation Flat  
 186 Low Adult Hunter 2'6 U/S  
 297 Open Warm Up 2'6  
 185, 185 Low Adult Hunter 2'6 O/F

### SATURDAY

#### JUMPER RING - 8 A.M.

408 Low Schooling 1.0m II  
 320 OPHA Medal  
 324 ASPCA/NHSAA Maclay  
 610 Int. Children's Jumper Classic 90m II, 2b  
 611 Int. Adult Jumper Classic 90m II, 2b  
 607 NAL/WIHS Children's Jumper Classic 1.15m II, 2b  
 608 NAL/WIHS Adult Jumper Classic 1.15m II, 2b  
 434 Low 1.20m Jr/AO II, 2.1  
 437 Medium 1.30m Jr/AO II, 2.1  
 456 1.35m Jumper II, 2.1  
 440 High 1.40m Jr/AO II, 2.1

#### 700 Steffe Sportsmanship Trophy Presentation

#### 501 \$20,000 USHJA International Hunter Derby

#### RING I - 8 A.M.

298 Open Warm Up (Time Permitting)  
 315 Adult Equitation Flat  
 316 Adult Equitation O/F  
 131 Adult Amateur Hunter 18-35 U/S  
 129, 130 Adult Amateur Hunter 18-35 O/F  
 136 Adult Amateur Hunter 36 & Over U/S  
 134, 135 Adult Amateur Hunter 36 & Over O/F  
 61 A/O Hunter 18-35 3'6 U/S  
 59 A/O Hunter 18-35 3'6 O/F  
 60 A/O Handy Hunter 18-35 3'6 O/F  
 66 A/O Hunter 36 & Over 3'6 U/S  
 64 A/O Hunter 36 & Over 3'6 O/F  
 65 A/O Handy Hunter 36 & Over 3'6 O/F  
 71 A/O Hunter 18-35 3'3 U/S  
 69 A/O Hunter 18-35 3'3 O/F  
 70 A/O Handy Hunter 18-35 3'3 O/F  
 76 A/O Hunter 36 & Over 3'3 U/S  
 74 A/O Hunter 36 & Over 3'3 O/F  
 75 A/O Handy Hunter 36 & Over 3'3 O/F  
 101 Junior Hunter 3'3 U/S  
 99 Junior Hunter 3'3 O/F  
 100 Junior Handy Hunter 3'3 O/F  
 81 Small Junior Hunter 15 & Under 3'6 U/S  
 79 Small Junior Hunter 15 & Under 3'6 O/F  
 80 Small Junior Handy Hunter 15 & Under 3'6 O/F  
 86 Small Junior Hunter 16-17 3'6 U/S  
 84 Small Junior Hunter 16-17 3'6 O/F  
 85 Small Junior Handy Hunter 16-17 3'6 O/F  
 91 Large Junior Hunter 15 & Under 3'6 U/S  
 89 Large Junior Hunter 15 & Under 3'6 O/F  
 90 Large Junior Handy Hunter 15 & Under 3'6 O/F  
 96 Large Junior Hunter 16-17 3'6 U/S  
 94 Large Junior Hunter 16-17 3'6 O/F  
 95 Large Junior Handy Hunter 16-17 3'6 O/F

### SATURDAY

#### RING II - 8 A.M.

111 Large Green Pony Hunter U/S  
 321 Marshall & Sterling Pony Medal  
 322 Dick Gascoigne Pony Medal  
 108, 109 Large Green Pony Hunter O/F  
 126 Large Pony Hunter U/S  
 124, 125\* Large Pony Hunter O/F  
 121 Medium Pony Hunter U/S  
 119, 120\* Medium Pony Hunter O/F  
 106 Sm/Medium Green Pony Hunter U/S  
 103, 104 Sm/Medium Green Pony Hunter O/F  
 116 Small Pony Hunter U/S  
 114, 115\* Small Pony Hunter O/F  
 508 Pony Hunter Classic 2nd Round  
 303 Leadline  
 301 Opportunity Short Stirrup Equitation Flat  
 302 Opportunity Short Stirrup Equitation O/F  
 201, 202 Opportunity Short Stirrup Hunter O/F  
 203 Opportunity Short Stirrup Hunter U/S  
 307 Opportunity Limit Equitation 2' Flat  
 308, 309 Opportunity Limit Equitation 2' O/F  
 206 Opportunity Cross Rails Hunter U/S  
 204, 205 Opportunity Cross Rails Hunter O/F  
 304 Walk Trot Poles Equitation Flat  
 305, 306 Walk Trot Poles Equitation O/F

\*First Round Classic

### SUNDAY

#### JUMPER RING - 8:00 A.M.

442 5 Yr Old YJC Qualifier 1.15m II, 2b  
 444 6 Yr Old YJC Qualifier 1.25m II, 2b  
 446 7 Yr Old YJC Qualifier 1.30m II, 2b  
 606 \$5,000 NAL Low 1.20 Jr/AO Jumper Classic II, 2b  
 605 \$5,000 Medium 1.30m Jr/AO Jumper Classic II, 2  
 604 \$5,000 High 1.40m Jr/AO Jumper Classic II, 2b

#### 601 \$50,000 Cleveland Grand Prix II, 2a, 1.50m

#### RING I & II Combined - 8 A.M.

502 \$5,000 USHJA National Hunter Derby  
 701 \$1,000 Turnout Award & Grooms Class  
 503 \$10,000 Future Hunter Stake  
 506 \$750 NAL/WIHS Adult Am Hunter Classic  
 507 \$750 NAL/WIHS Children's Hunter Classic

# OPENING WEEK – JULY 6 – 8, 2017

OPHA; KHJA; IHJA; OHJA; WPA PHA; VHSA; ETHJA; MOHJO

These days are NOT rated by USEF.

This is a SEPARATE show from the Rated Show and is Up & Over approved.

Please use the OPENING WEEK ENTRY BLANK to enter classes.

Entries close June 19, 2017. Post entry fee of \$20 will be charged to entries received after the closing date.

Trophy & Six Ribbons will be awarded in each class.

Division Championships will be awarded to all Hunter Sections and to all Equitation sections that offer 3 classes. Unless otherwise stated, for all Sections at Opening Week, please refer to OPHA Rulebook for class specifications.

Available at [www.opha.org](http://www.opha.org) and in the Horse Show Office.

## \$650 LEADING TRAINER & HIGH POINT BARN AWARD

*sponsored by Buckeye Nutrition*

Points from all ribbons won by horses and riders under each trainer's name for both the Rated and Unrated shows will accumulate for this award. Championships, Reserve Championships, warm up classes, blue ribbon jumper classes, Classics, Derbies, and team class points are excluded.

## HUNTERS

### Baby Green Hunter

Entry Fee: \$35 per class. Fences 2'6".

1, 2	Baby Green Hunter O/F	Trophy & Six Ribbons
3	Baby Green Hunter U/S	Trophy & Six Ribbons

### Very Green Hunter

Entry Fee: \$35 per class. Fences 2'6".

4, 5	Very Green Hunter O/F	Trophy & Six Ribbons
6	Very Green Hunter U/S	Trophy & Six Ribbons

### Special Hunter

Entry Fee: \$35 per class. Fences 2'6".

7, 8	Special Hunter O/F	Trophy & Six Ribbons
9	Special Hunter U/S	Trophy & Six Ribbons

### Non-Professional Hunter

Entry Fee: \$35 per class.

Open to riders (with limited experience) who are no longer eligible to compete as Juniors. Fences 2'6".

10, 11	Non-Professional Hunter O/F	Trophy & Six Ribbons
12	Non-Professional Hunter U/S	Trophy & Six Ribbons

### Low Hunter

Entry Fee: \$35 per class. Fences 3'.

13, 14	Low Hunter O/F	Trophy & Six Ribbons
15	Low Hunter U/S	Trophy & Six Ribbons

### Green Hunter 3' or 3'3"

Entry Fee: \$35 per class. Fences 3' or 3'3".

16, 17	Green Hunter 3' or 3'3" O/F	Trophy & Six Ribbons
18	Green Hunter 3' or 3'3" U/S	Trophy & Six Ribbons

# OPENING WEEK – JULY 6 – 8, 2017

## **Green Hunter 3'6" or 3'9"**

Entry Fee: \$35 per class. Fences 3'6 or 3'9".

19, 20,	Green Hunter 3'6" or 3'9" O/F	Trophy & Six Ribbons
21	Green Hunter 3'6" or 3'9" U/S	Trophy & Six Ribbons

## **Performance Hunter 3'3" or 3'6"**

Entry Fee: \$35 per class Fences 3'3" or 3'6"

22, 23	Performance Hunter 3'3" or 3'6" O/F	Trophy & Six Ribbons
24	Performance Hunter 3'3" or 3'6" O/F	Trophy & Six Ribbons

## **Amateur Owner Hunter 3'3" sponsored by Chagrin Valley Chamber of Commerce**

Entry Fee: \$35 per class.

Horse/rider combination may not cross enter into Amateur Owner 3'6". Fences 3'3".

25, 26, 27	Amateur Owner Hunter 3'3" O/F	Trophy & Six Ribbons
28	Amateur Owner Hunter 3'3" U/S	Trophy & Six Ribbons

## **Amateur Owner Hunter 3'6" sponsored by Chagrin Valley Chamber of Commerce**

Entry Fee: \$35 per class.

Horse/rider combination may not cross enter into Amateur Owner 3'3". Fences 3'6".

29, 30, 31	Amateur Owner Hunter 3'6" O/F	Trophy & Six Ribbons
32	Amateur Owner Hunter 3'6" U/S	Trophy & Six Ribbons

## **Junior Hunter 3'3"**

Entry Fee: \$35 per class.

Riders may not cross enter into Children's Hunter or Low Children's Hunter Divisions. Fences 3'3".

33, 34, 35	Junior Hunter 3'3" O/F	Trophy & Six Ribbons
36	Junior Hunter 3'3" U/S	Trophy & Six Ribbons

## **Junior Hunter 3'6"**

Entry Fee: \$35 per class.

Riders may not cross enter into Children's Hunter or Low Children's Hunter Divisions. Fences 3'6".

37, 38, 39	Junior Hunter 3'6" O/F	Trophy & Six Ribbons
40	Junior Hunter 3'6" U/S	Trophy & Six Ribbons

## **Small Pony Hunter**

Entry Fee: \$35 per class. Fences 2'3".

41, 42, 43	Small Pony Hunter O/F	Trophy & Six Ribbons
44	Small Pony Hunter U/S	Trophy & Six Ribbons

## **Medium Pony Hunter**

Entry Fee: \$35 per class. Fences 2'6".

45, 46, 47	Medium Pony Hunter O/F	Trophy & Six Ribbons
48	Medium Pony Hunter U/S	Trophy & Six Ribbons

## **Large Pony Hunter**

Entry Fee: \$35 per class. Fences 2'9"- 3'.

49, 50, 51	Large Pony Hunter O/F	Trophy & Six Ribbons
52	Large Pony Hunter U/S	Trophy & Six Ribbons

# OPENING WEEK – JULY 6 – 8, 2017

## Green Pony Hunter

Entry Fee: \$35 per class. Fences 2'3"-Sm; 2'6"-Med 2'9"-Large.

53, 54, 55	Green Pony Hunter O/F	Trophy & Six Ribbons
56	Green Pony Hunter U/S	Trophy & Six Ribbons

## Children's Hunter Pony

Entry Fee: \$35 per class.

Ponies may not compete in the Children's Pony Section if also entered in the Pony Hunter division at the same show.

Fences 2'-Sm & Med; 2'6" Lg.

57, 58, 59	Children's Hunter Pony O/F	Trophy & Six Ribbons
60	Children's Hunter Pony U/S	Trophy & Six Ribbons

## Adult Amateur Hunter sponsored by Laurel Tree Advisors

Entry Fee: \$35 per class. Fences 3'.

61, 62, 63	Adult Amateur Hunter O/F	Trophy & Six Ribbons
64	Adult Amateur Hunter U/S	Trophy & Six Ribbons

## Children's Hunter sponsored by Tyler-Stone Wealth Management

Entry Fee: \$35 per class. 3'0".

65, 66, 67	Children's Hunter O/F	Trophy & Six Ribbons
68	Children's Hunter U/S	Trophy & Six Ribbons

## Low Adult Amateur Hunter in honor & memory of Dr. Cyndi Roller

Entry Fee: \$35 per class. Fences 2'6".

69, 70, 71	Low Adult Hunter O/F	Trophy & Six Ribbons
72	Low Adult Hunter U/S	Trophy & Six Ribbons

## Low Children's Hunter

Entry Fee: \$35 per class. Fences 2'6".

73, 74, 75	Low Children's Hunter O/F	Trophy & Six Ribbons
76	Low Children's Hunter U/S	Trophy & Six Ribbons

## Short Stirrup Hunter

Entry Fee: \$35 per class.

Open to all riders 12 yrs of age and under. Riders may NOT cross enter into any other OPHA recognized division at Opening Week show except age appropriate under saddle classes. Fences 2'.

77, 78, 79	Short Stirrup Hunter O/F	Trophy & Six Ribbons
80	Short Stirrup Hunter U/S	Trophy & Six Ribbons

## Schooling Hunter Warm Up

Entry Fee: \$40 per class

400 - 417	Schooling Hunter Warm Ups 2'-3'6" (see schedule for class numbers & heights).	Trophy & Six Ribbons
-----------	---	----------------------

# OPENING WEEK – JULY 6 – 8, 2017

## Hunter Classics & Derbies

- 601**                    **\$3,500 Mini Hunter Derby**  
*Presented by C. Jarvis/Assured Partners*
- Entry Fee: \$150. Open to all horses & riders. Fences: 2'6" – 3'.                    \$1,050, \$770, \$455, \$320, \$280, \$245, \$210, \$170
- Horse/Rider combination must have competed in one other hunter over fences or jumper class to be eligible.* A Two Round Competition. Scored by one or two judges using the open numerical judging system and supplying one numerical score per entry. In the first round, all entries will jump a course of at least 10 jumps 2'6" to 3' in height and spread. The TOP 12 highest scoring entries in the first round will return, in reverse order of the first round scores to jump a second round of at least 8 jumps at the same height and spread as in the first round. The scores of the 12 horses/ponies will be added to their first round scores and placed in order of their overall scores. Horses tied for first place only will return to jump a third round over a shortened course. Ties for all other places will be broken by the judges.
- 602**                    **\$250 Buckeye Veterinary Service Pony Hunter Classic**                    \$75, \$55, \$40, \$30, \$20, \$15, \$10, \$5
- Entry Fee: \$40. Open to Ponies entered in the Pony Hunter Divisions. Fences 2'3" Sm; 2'6" Med; 2'9"-3' Large.  
To be ridden by a Junior exhibitor eligible to ride in the Pony Hunter Division.  
A second round Classic where both rounds are numerically scored. Must be entered in the office to be scored in qualifying round.

## Equitation & Medals

Entry Fee: \$35 per class

- |     |   |                      |
|-----|---|----------------------|
| 201 | Low Adult Amateur Equitation in the Flat  | Trophy & Six Ribbons |
| 202 | Low Adult Amateur Equitation O/F 2'6"   | Trophy & Six Ribbons |
| 203 | Low Children's Equitation on the Flat   | Trophy & Six Ribbons |
| 204 | Low Children's Equitation O/F 2'6"  | Trophy & Six Ribbons |
| 205 | Adult Amateur Equitation on the Flat  | Trophy & Six Ribbons |
| 206 | <b>NARHA Adult Amateur Equitation</b><br>Open to all amateur riders except Amateur Owners. 3 competitors must complete the course to fill the class.<br>Fences 3'.  | Trophy & Six Ribbons |
| 207 | Children's Equitation on the Flat   | Trophy & Six Ribbons |
| 208 | <b>Fox Smith Memorial Medal</b><br>Additional testing of the top 4 riders required; test(s) at the judge's discretion. Fences 3'.   | Trophy & Six Ribbons |
| 209 | 17 & Under Equitation on the Flat   | Trophy & Six Ribbons |
| 210 | <b>O.P.H.A. Hunter Seat Medal</b><br>Open to Junior members. Additional testing of the top 4 riders required; test(s) at the judge's discretion. 3 competitors must complete the course to fill the class. Fences 3'6". | Trophy & Six Ribbons |
| 211 | Pony Equitation on the Flat   | Trophy & Six Ribbons |
| 212 | <b>Dick Gascoigne Memorial Pony Medal</b><br>Two tests (USEF 1-9) are required during the first round. Only one rider per pony permitted. 3 competitors must COMPLETE the course for class to fill.                     | Trophy & Six Ribbons |
| 213 | Children's Pony Equitation on the Flat  | Trophy & Six Ribbons |
| 214 | Short Stirrup Equitation on the Flat  | Trophy & Six Ribbons |

# OPENING WEEK – JULY 6 – 8, 2017

## OPHA Schooling Divisions

Riders in these divisions are NOT eligible to enter ANY other classes at this show. Three entries in a class are required for points to count. Consult OPHA Rule Bok for additional regulations. Standing martingales permitted in all classes of these divisions. Only 6 entries to canter simultaneously in W/T/C divisions.

### Walk / Trot – Cross Rails (Open to all ages)

Entry Fee: \$30 per class

101	Walk / Trot Cross Rails Warmup (Does not count toward Championship)	Trophy & Six Ribbons
102, 103	Walk / Trot Cross Rails	Trophy & Six Ribbons
104	Walk / Trot Cross Rails U/S	Trophy & Six Ribbons
105	Walk / Trot Cross Rails Equitation on the Flat	Trophy & Six Ribbons

### Walk / Trot / Canter Cross Rails (Open to all ages)

Entry Fee: \$30 per class.

106	Walk / Trot / Canter Cross Rails Warmup (Does not count towards Championship)	Trophy & Six Ribbons
107, 108	Walk / Trot / Canter Cross Rails	Trophy & Six Ribbons
109	Walk / Trot / Canter Cross Rails U/S	Trophy & Six Ribbons
110	Walk / Trot / Canter Cross Rails Equitation on the Flat	Trophy & Six Ribbons

### Limit Rider (Open to all ages)

Entry Fee: \$30 per class. Fences 1'6" – 2'.

111	Limit Rider Warmup (Does not count towards Championship)	Trophy & Six Ribbons
112, 113	Limit Rider O/F	Trophy & Six Ribbons
114	Limit Rider U/S	Trophy & Six Ribbons
115	Limit Rider Equitation on the Flat	Trophy & Six Ribbons

### Novice Rider (Open to all ages)

Entry Fee: \$30 per class. Fences 2'3" – 2'6".

116, 117	Novice Rider Warmup (Does not count towards Championship)	Trophy & Six Ribbons
118, 119, 120	Novice Rider O/F	Trophy & Six Ribbons
121	Novice Rider U/S	Trophy & Six Ribbons
122	Novice Rider Equitation on the Flat	Trophy & Six Ribbons

### Leadline

Entry Fee: \$20

Open to Juniors 9 yrs. & Under. Children in this class are NOT eligible for ANY other class

To be judged on suitability for children with emphasis on manners 40%. Riders to be judged on seat and hands, potential 60%.

123	Leadline	Trophy & Six Ribbons
-----	----------	----------------------

### Open Equitation 2'6"

Entry Fee: \$35 per class.

215, 216	Open Equitation O/F 2'6"	Trophy & Six Ribbons
217	Open Equitation 2'6" on the Flat	Trophy & Six Ribbons

### 2'6" Equitation Medal

Entry Fee: \$35

218	2'6" Equitation Medal	Trophy & Six Ribbons
-----	-----------------------	----------------------

# OPENING WEEK – JULY 6 – 8, 2017

## Open Equitation 2'9" – 3'

Entry Fee: \$35 per class.

219, 220	Open Equitation O/F 2'9" – 3'	Trophy & Six Ribbons
221	Open Equitation 2'9" – 3' on the Flat	Trophy & Six Ribbons

## Open Equitation 3'3"

Entry Fee: \$35 per class.

222, 223	Open Equitation O/F 3'3"	Trophy & Six Ribbons
224	Open Equitation 3'3" on the Flat	Trophy & Six Ribbons

## Open Equitation 3'6"

225, 226	Open Equitation O/F 3'6"	Trophy & Six Ribbons
227	Open Equitation 3'6" on the Flat	Trophy & Six Ribbons

## Jumpers

### Beginner Jumper

Entry Fee: \$35 per class. Open to horses and ponies with limited jumping experience. Fences .70m - .75m

301	Beginner Jumper II, 2b	Trophy & Six Ribbons
302	Beginner Jumper IV, Sec 1	Trophy & Six Ribbons

### Training Jumper

Entry Fee: \$35 per class. Open to all horses and riders. Fences .85m - .90m

303	Training Jumper II, 2b	Trophy & Six Ribbons
304	Training Jumper IV, Sec 1	Trophy & Six Ribbons

### High Schooling Jumper

Entry Fee: \$35 per class. Open to all horses and riders. Fences 1.10m

305, 306	High Schooling Jumper II	Trophy & Six Ribbons
----------	--------------------------	----------------------

### Low Schooling Jumper

Entry Fee: \$35 per class. Open to all horses and riders. Fences 1.0m

307, 308	Low Schooling Jumper II	Trophy & Six Ribbons
----------	-------------------------	----------------------

### Open Modified Jumper

Entry Fee: \$35 per class. Open to all horses and riders. Fences 1.20m

309	Open Modified Jumper II, 2b	Trophy & Six Ribbons
310	Open Modified Jumper II, Sec 1	Trophy & Six Ribbons

### Intermediate Child/Adult Amateur Jumper *sponsored by S.A. Comunale Co.*

Entry Fee: \$35 per class.

The horse/rider combination may NOT compete in any other class at the Opening Week show where fences exceed 1.0m.

Fences .85m-.90m

311	Intermediate Child/Adult Amateur Jumper II, 2b	Trophy & Six Ribbons
312, 313	Intermediate Child/Adult Amateur Jumper IV, Sec 1	Trophy & Six Ribbons



# OPENING WEEK – JULY 6 – 8, 2017

## Low Child/Adult Amateur Jumper

Entry Fee: \$35 per class

Riders may not cross enter into Child/Adult Amateur or Junior/AO Jumpers. Fences 1.0m.

314	Low Child/Adult Amateur Jumper II, 2b	Trophy & Six Ribbons
315, 316	Low Child/Adult Amateur Jumper IV, Sec 1	Trophy & Six Ribbons

## Child/ Adult Amateur Jumper

Entry Fee: \$35 per class

The Horse/rider combination may NOT compete in any other class at the Opening Week show where fences exceed 1.15m. Fences 1.0m.

317	Child/Adult Amateur Jumper II, 2b	Trophy & Six Ribbons
318, 319	Child/Adult Amateur Jumper II, Sec 1	Trophy & Six Ribbons

## Junior/Amateur Owner Jumper

Entry Fee: \$35 per class.

Riders may not cross enter into Low Child/Adult Amateur or Child/Adult Amateur Jumper. Fences 1.20m.

320	Junior/Amateur Owner Jumper II, 2b	Trophy & Six Ribbons
321	Junior/Amateur Owner Jumper II, Sec 1	Trophy & Six Ribbons

## Jumper Classics & Mini Prix

501	Beginner Jumper Classic II, 2b` Entry Fee: \$35. Fences .70m-.75m	Trophy & Six Ribbons
502	Intermediate Child/Adult Amateur Jumper Classic Entry Fee: \$35. Fences .85m-.90m	Trophy & Six Ribbons
503	Low Child/Adult Amateur Jumper Classic II, 2b <i>in Memory of James &amp; Audrey Millar</i> Entry Fee: \$35. Fences 1.0m	Trophy & Six Ribbons
504	Child/Adult Amateur Jumper Classic II, 2b Entry Fee: \$35. Fences 1.10m	Trophy & Six Ribbons
505	Junior/Amateur Owner Jumper Classic II, 2b Entry Fee: \$35. Fences 1.20m	Trophy & Six Ribbons

## 506 \$5,000 1.10m Mini Prix II, 2b

*Presented by Leikin Motor Companies Mercedes-Benz of Willoughby | Volvo of Willoughby*

Entry Fee \$190. Fences 1.20m

\$1,500, \$1,100 \$650, \$400 \$300, \$250, \$200, \$200 \$200

*Horse/Rider combination must have competed in one other hunter over fences or jumper class to be eligible.*

# SUNSET YOGA

yoga • nature • complimentary refreshments

*Stretch out your horse show muscles  
with an evening of moderate  
vinyasa flow yoga.*

**Refreshments to follow!**

**When:** 5:30-6:45 p.m., Tuesday, July 11

**Where:** Cleveland Metroparks Polo Field  
Chalet near Rt. 87 parking lot

**Bring:** Water bottle, towel, yoga mat  
(extra mats will be available)

*Beginner to advanced welcome!*  
Ages 12+

**FREE to exhibitors**  
**Public \$10**

**Questions:** Lynne Pollack (440) 759-1969



**About the teacher:**

*Boo Geisse is an English professor, writer,  
certified yoga instructor and lifelong equestrian.  
Her horse, Catino, is very grateful she found yoga.*

# RIDERS WITH DISABILITIES HORSE SHOW

JULY 10, 2017

Riders with disabilities competitors may enter only ONE division. All riders are asked to follow guidelines set by The North American Riding for the Handicapped Association. Entry fee: \$15 per class.

## **Division I Carriage Driving**

Drivers maneuver a horse and carriage through a series of obstacles and figures at the walk and trot. Drives are judged on accuracy, posture and reinmanship

- 1 Carriage Driving

## **Division II Horsemanship**

Riders will lead a horse through an obstacle course. The division is open to students of any age who are actively participating in a ground lesson program leading horses.

- 2 Horsemanship – Sec. A
- 3 Horsemanship – Sec. B

## **Division III 18 & Over**

Open to riders who are over the age of 18 and are unable to compete in the Intermediate Advance or Walk/Trot/Canter divisions. Riders can be of any level.

- 4 18 & Over – Trail Class
- 5 18 & Over – Equitation
- 6 18 & Over – Trail Walk Only
- 7 18 & Over – Equitation Walk Only

## **Division IV Beginner**

Riders typically have a leader and 1-2 side walkers providing physical and/or verbal assistance in order to perform circles, reverses, steering, halts and transitions at a walk only level. No two-point in this division.

- 8 Beginner – Trail Class Sec. A
- 9 Beginner – Equitation Sec. A
- 10 Beginner – Trail Class Sec. B
- 11 Beginner – Equitation Sec. B

## **Division V Novice**

Riders typically have a leader and 0-1 side walkers providing verbal and/or physical assistance only. Riders are able to 1) Maintain physical position independently, 2) Execute steering challenges with verbal assistance only, 3) Sit the trot, posting not required, 4) Perform circles, reverses, halts and transitions with verbal assistance only. Sit the trot, posting not required. Perform circles, reverses, halts, two-points and transitions with verbal assistance only.

- 12 Novice – Trail Class Sec. A
- 13 Novice – Equitation Sec. A
- 14 Novice – Trail Class Sec. B
- 15 Novice – Equitation Sec. B

Please Return Entries Made Payable to  
Chagrin Valley PHA Horse Show, Inc.  
Horse Show  
16497 Snyder Road  
Chagrin Falls, OH 44025

For more information contact :  
Fieldstone Farm Therapeutic  
Riding Center (440) 708-0013

# RIDERS WITH DISABILITIES HORSE SHOW

JULY 10, 2017

## Division VI Intermediate

Riders typically have a leader only. Riders are able to maintain correct position and seat throughout duration of class. Execute a posting trot. Perform all tasks independently. Perform smooth transitions between combinations including halt, walk and trot. Perform change of rein, circles and required patterns, if necessary. Perform two-point positions when necessary at both walk and trot.

- 16 Intermediate – Trail Class Sec. A
- 17 Intermediate – Equitation Sec. A
- 18 Intermediate – Trail Class Sec. B
- 19 Intermediate – Equitation Sec. B

## Division VII Futures

The Futures Division is open to riders of all ages who can ride independently at the walk and with minimal verbal assistance at the trot during their riding lessons. If riders are not riding their typical horse the day of the show they can remain on lead for all their classes. The Futures class is for riders who are able to post the trot and perform steering while trotting but are not yet independently able to perform a dressage test. Diagonals are not required for this division. Riders are judged on posture, 2-point position, use of aids, accuracy of ring figures, straight lines and

- 20 Futures – Trail Class Sec. A
- 21 Futures – Equitation Sec. A
- 22 Futures – Trail Class Sec. B
- 23 Futures – Equitation Sec. B

## Division VIII Advanced

Riders are independent with the optional use of spotters. Riders are able to maintain correct position and seat throughout duration of the class. Execute a posting trot, in rhythm and on correct diagonal. Able to correct diagonal if necessary. Perform all tasks independently. Perform smooth transitions between combinations including halt, walk and trot. Perform change of rein, circles and required patterns, if necessary. Perform two-point

- 24 Advanced – Dressage
- 25 Advanced – Equitation

## Division IX Walk / Trot / Canter

Open to riders who meet the criteria of advanced with the addition of the canter in all.

- 26 Walk / Trot / Canter Dressage
- 27 Walk / Trot / Canter Equitation

Please Return Entries Made Payable to  
Chagrin Valley PHA Horse Show, Inc.  
Horse Show  
16497 Snyder Road  
Chagrin Falls, OH 44025

For more information contact :  
Fieldstone Farm Therapeutic  
Riding Center (440) 708-0013

# RIDERS WITH DISABILITIES HORSE SHOW

JULY 10, 2017

## Time Schedule – 10:00 a.m. – Jumper Ring

Div. I	1	Carriage Driving	Div. VI	16	Intermediate Trail Class – A
Div. II	2	Horsemanship - A		17	Intermediate Equitation - A
	3	Horsemanship - B		18	Intermediate Trail Class - B
Div. III	4	18 & Over Trail		19	Intermediate Equitation - B
	5	18 & Over Equitation	Div. VII	20	Futures Trail Class - A
	6	18 & Over Trail Walk Only		21	Futures Equitation - A
	7	18 & Over Equitation Walk Only		22	Futures Trail Class - B
Div. IV	8	Beginner Trail Class – A		23	Futures Equitation - B
	9	Beginner Equitation – A	Div. VIII	24	Advanced - Dressage
	10	Beginner Trail Class – B		25	Advanced - Equitation
	11	Beginner Equitation – B	Div. IX	26	W/T/C - Dressage
Div. V	12	Novice Trail Class – A		27	W/T/C - Equitation
	13	Novice Equitation – A			
	14	Novice Trail Class – B			
	15	Novice Equitation - B			

Please Return Entries Made Payable to  
Chagrin Valley PHA Horse Show, Inc.  
Horse Show  
16497 Snyder Road  
Chagrin Falls, OH 44025

For more information contact :  
Fieldstone Farm Therapeutic  
Riding Center (440) 708-0013

# 2017 CHAGRIN HUNTER JUMPER CLASSIC OPENING WEEK - (NON-RATED USEF)

OPHA, WPA PHA, UP & OVER, KHJA, IHJA, OHJA, MoHJO, VHSA, ETHJA  
 METROPARKS POLO FIELD, MORELAND HILLS, OH  
 CLOSING DATE: JUNE 19, 2017  
 PLEASE PRINT OR TYPE CLEARLY - MAKE COPIES AS NEEDED

Name of Horse / Pony		Name of Rider(s)		Class Numbers / Divisions
		Rider One		
		Rider Two		

Credit Card # \_\_\_\_\_ Exp. Date: \_\_\_\_\_ Code: \_\_\_\_\_  
 Name on Card: \_\_\_\_\_ Billing Zip: \_\_\_\_\_ Phone: \_\_\_\_\_

**ENTER ONLINE AT WWW.HORSESHOWSONLINE.COM**  
**Make Checks Payable to and MAIL to Chagrin Hunter Jumper Classic**  
**9129 Old Meadow Drive, Chagrin Falls, OH 44023**  
**Show Sec: Linda Seay - (615) 943-9128**

**RELEASE, ASSUMPTION OF RISK, WAIVER AND INDEMNIFICATION**  
 This document waives important legal rights. Read it carefully before signing.  
 I AGREE in consideration for my participation in this Competition to the following: I AGREE that the Chagrin Valley Hunter Jumper Classic Opening Week "Competition" as used herein includes the Competition Management, as well as all of their officials, officers, directors, employees, agents, personnel, volunteers and Federation affiliates. I AGREE that I choose to participate voluntarily in the Competition with my horse, as a rider, driver, handler, longeur, lessee, owner, agent, coach, trainer, or as parent or guardian of a junior exhibitor. I am fully aware and acknowledge that horse sports and the Competition involve inherent dangerous risks of accident, loss, and serious bodily injury including broken bones, head injuries, trauma, pain, suffering, or death ("Harm"). I AGREE to hold harmless and release the Competition from all claims for money damages or otherwise for any harm to me or my horse and for any harm of any nature caused by me or my horse to others, even if the Harm arises or results, directly or indirectly, from the negligence of the Competition. I AGREE to expressly assume all risks of Harm to me or my horse, including Harm resulting from the negligence of the Competition. I AGREE to indemnify (that is, to pay any losses, damages, or costs incurred by) the Competition and to hold them harmless with respect to claims for Harm to me or my horse, and for claims made by others for any Harm caused by me or my horse while at the Competition. I have read the Competition Rules about protective equipment and I understand that I am entitled to wear protective equipment without penalty, and I acknowledge that the Competition strongly encourages me to do so while WARNING that no protective equipment can guard against all injuries. If I am a parent or guardian of a junior exhibitor, I consent to the child's participation and AGREE to all of the above provisions and AGREE to assume all of the obligations of this Release on the child's behalf I represent that I have the requisite training, coaching and abilities to safely compete in this competition. I AGREE that if I am injured at this Competition, the medical personnel treating my injuries may provide information on my injury and treatment to the Competition on the official accident/injury report form.

**BY SIGNING BELOW, I AGREE** to be bound by all applicable Competition Rules and all terms and provisions of this Prize List. If I am signing and submitting this Agreement electronically, I acknowledge that my electronic signature shall have the same validity, force and effect as if I affixed my signature by my own hand.

<p>X <b>Owner's Signature (mandatory)</b></p> <p>NAME _____                  STREET _____                  CITY _____ ZIP _____                  STATE _____ ZIP _____                  TEL _____                  EMAIL: _____</p> <p>X _____                  Parent or Guardian Signature (required if rider is a minor)</p>	<p>X <b>First Rider's Signature (mandatory)</b></p> <p>NAME _____                  STREET _____                  CITY _____ ST _____                  ZIP _____ TEL _____                  US CITIZEN yes ___ no ___ D.O.B. _____                  EMAIL: _____</p> <p>X _____                  Parent or Guardian Signature (required if rider is a minor)</p>	<p>X <b>Second Rider's Signature (mandatory)</b></p> <p>NAME _____                  STREET _____                  CITY _____ ST _____                  ZIP _____ TEL _____                  US CITIZEN yes ___ no ___ D.O.B. _____                  EMAIL: _____</p> <p>X _____                  Parent or Guardian Signature (required if rider is a minor)</p>
<p>X <b>Trainer's Signature (mandatory)</b></p> <p>NAME _____                  STREET _____                  CITY _____ ZIP _____                  STATE _____ ZIP _____                  TEL _____                  EMAIL: _____</p> <p>X _____                  Coach's Signature (if applicable)</p> <p>NAME: _____</p>		

STABLE WITH: \_\_\_\_\_ ARRIVING: \_\_\_\_\_ EMERGENCY CONTACT NAME/CELL PHONE: \_\_\_\_\_

Office Fee	\$20
Stalls @ \$180	
Entry Fees	
Non-Showing Horse Fee \$125	
Post Entry Fee (See Rules)	
Horse Watch Fee \$10 (Required per stabled horse)	\$10
Grounds Fee (Required per Horse)	\$25
Haul In Fee \$50 per day	
<b>TOTAL</b>	

# CHAGRIN VALLEY HUNTER JUMPER CLASSIC

JULY 11-16, 2017

## WCHR – “PREMIER” RATED HUNTERS

### High Performance Hunter

Division Fee: \$375. Individual classes: \$75. Fences 4'0"

1, 2, 3,	\$400 High Performance Hunter O/F	\$120, \$88, \$60, \$48, \$44, \$40, R, R
4	\$400 High Performance Handy Hunter O/F	\$120, \$88, \$60, \$48, \$44, \$40, R, R
5	\$400 High Performance Hunter U/S	\$120, \$88, \$60, \$48, \$44, \$40, R, R

### Performance Hunter 3'6"

Division Fee: \$250. Individual classes: \$50. Fences 3'6"

6, 7, 8	\$200 Performance Hunter 3'6" O/F	\$60, \$44, \$30, \$24, \$22, \$20, R, R
9	\$200 Performance Handy Hunter 3'6" O/F	\$60, \$44, \$30, \$24, \$22, \$20, R, R
10	\$200 Performance Hunter 3'6" U/S	\$60, \$44, \$30, \$24, \$22, \$20, R, R

### Performance Hunter 3'3"

Division Fee: \$250. Individual classes: \$50. Fences 3'3"

11, 12, 13	\$200 Performance Hunter 3'3" O/F	\$60, \$44, \$30, \$24, \$22, \$20, R, R
14	\$200 Performance Handy Hunter 3'3" O/F	\$60, \$44, \$30, \$24, \$22, \$20, R, R
15	\$200 Performance Hunter 3'3" U/S	\$60, \$44, \$30, \$24, \$22, \$20, R, R

### High Performance Conformation Hunter

Division Fee: \$225. Model Fee: \$25. Fences 3'9"

16	High Performance Conformation Model	
17, 18, 19	\$300 High Performance Conformation Hunter O/F	\$90, \$66, \$45, \$36, \$33, \$30, R, R
20	\$300 High Performance Conformation Handy Hunter O/F	\$90, \$66, \$45, \$36, \$33, \$30, R, R
21	\$300 High Performance Conformation Hunter	\$90, \$66, \$45, \$36, \$33, \$30, R, R

### Green Hunter 3'9"

Division Fee: \$225

22, 23, 24	\$300 Green Hunter 3'9" O/F	\$90, \$66, \$45, \$36, \$33, \$30, R, R
25	\$300 Green Handy Hunter 3'9" O/F	\$90, \$66, \$45, \$36, \$33, \$30, R, R
26	\$300 Green Hunter 3'9" U/S	\$90, \$66, \$45, \$36, \$33, \$30, R, R

### Green Hunter 3'6"

Division Fee: \$225

27, 28, 29	\$300 Green Hunter 3'6" O/F	\$90, \$66, \$45, \$36, \$33, \$30, R, R
30	\$300 Green Handy Hunter 3'6" O/F	\$90, \$66, \$45, \$36, \$33, \$30, R, R
31	\$300 Green Hunter 3'6" U/S	\$90, \$66, \$45, \$36, \$33, \$30, R, R

### Green Conformation Hunter

Division Fee: \$225. Model Fee \$25. Fences 3'6"

32	Green Conformation Model	
33, 34, 35	\$300 Green Conformation Hunter 3'6" O/F	\$90, \$66, \$45, \$36, \$33, \$30, R, R
36	\$300 Green Conformation Handy Hunter 3'6" O/F	\$90, \$66, \$45, \$36, \$33, \$30, R, R
37	\$300 Green Conformation Hunter 3'6" U/S	\$90, \$66, \$45, \$36, \$33, \$30, R, R

# CHAGRIN VALLEY HUNTER JUMPER CLASSIC

JULY 11-16, 2017

## WCHR – “PREMIER” RATED HUNTERS

### Green Hunter 3'3"

Division Fee: \$200

38, 39, 40	\$270 Green Hunter 3'3" O/F	\$81, \$60, \$41, \$33, \$30, \$27, R, R
41	\$270 Green Handy Hunter 3'3" O/F	\$81, \$60, \$41, \$33, \$30, \$27, R, R
42	\$270 Green Hunter 3'3" U/S	\$81, \$60, \$41, \$33, \$30, \$27, R, R

### Green Hunter 3'3"

Division Fee: \$200

43, 44, 45	\$270 Green Hunter 3'3" O/F	\$81, \$60, \$41, \$33, \$30, \$27, R, R
46	\$270 Green Handy Hunter 3'3" O/F	\$81, \$60, \$41, \$33, \$30, \$27, R, R
47	\$270 Green Hunter 3'3" U/S	\$81, \$60, \$41, \$33, \$30, \$27, R, R

### Young Hunter 3'6" (7 yrs & under)

Division Fee: \$150. Must be USEF age verified before competing

48, 49	Young Hunter 3'6 O/F	Trophy & 8 Ribbons
50	Young Hunter U/S	Trophy & 8 Ribbons

### Young Hunter 3'3" (6 yrs & under)

Division Fee: \$150. Must be USEF age verified before competing

51, 52	Young Hunter 3'3 O/F	Trophy & 8 Ribbons
53	Young Hunter 3'3" U/S	Trophy & 8 Ribbons

### Young Hunter 3'0" (5 yrs & under)

Division Fee: \$150. Must be USEF age verified before competing

44, 55	Young Hunter 3'6 O/F	Trophy & 8 Ribbons
56	Young Hunter U/S	Trophy & 8 Ribbons

### Amateur Owner Hunter 18-35

Division Fee: \$225. Fences 3'6"

57, 58, 59	\$300 Amateur Owner Hunter 18-35 3'6" O/F	\$90, \$66, \$45, \$36, \$33, \$30, R, R
60	\$300 Amateur Owner Handy Hunter 18-35 O/F	\$90, \$66, \$45, \$36, \$33, \$30, R, R
61	\$300 Amateur Owner Hunter 18-35 3'6" U/S	\$90, \$66, \$45, \$36, \$33, \$30, R, R

### Amateur Owner Hunter 36 & Over sponsored by Chagrin Valley Chamber of Commerce

Division Fee: \$225. Fences 3'6"

62, 63, 64	\$300 Amateur Owner Hunter 36 & Over 3'6" O/F	\$90, \$66, \$45, \$36, \$33, \$30, R, R
65	\$300 Amateur Owner Handy Hunter 36 & Over 3'6" O/F	\$90, \$66, \$45, \$36, \$33, \$30, R, R
66	\$300 Amateur Owner Hunter 36 & Over 3'6" U/S	\$90, \$66, \$45, \$36, \$33, \$30, R, R



# CHAGRIN VALLEY HUNTER JUMPER CLASSIC

JULY 11-16, 2017

## WCHR – “PREMIER” RATED HUNTERS

### Amateur Owner Hunter 3'3" – 18-35

Division Fee: \$225

67, 68, 69	\$300 Amateur-Owner Hunter 3'3" 18-35 O/F	\$90, \$66, \$45, \$36, \$33, \$30, R, R
70	\$300 Amateur Owner Handy Hunter 3'3" 18-35 O/F	\$90, \$66, \$45, \$36, \$33, \$30, R, R
71	\$300 Amateur Owner Hunter 3'3" 18-35 U/S	\$90, \$66, \$45, \$36, \$33, \$30, R, R

### Amateur Owner Hunter 3'3" – 36 & Over sponsored by Chagrin Valley Chamber of Commerce

Division Fee: \$225

72, 73, 74	\$300 Amateur Owner Hunter 3'3" 36 & Over O/F	\$90, \$66, \$45, \$36, \$33, \$30, R, R
75	\$300 Amateur Owner Handy Hunter 3'3" 36 & Over O/F	\$90, \$66, \$45, \$36, \$33, \$30, R, R
76	\$300 Amateur Owner Hunter 3'3" 36 & Over U/S	\$90, \$66, \$45, \$36, \$33, \$30, R, R

### Small Junior Hunter 15 & Under

Division Fee: \$225. Fences 3'6"

77, 78, 79	\$300 Small Junior Hunter 15 & Under O/F	\$90, \$66, \$45, \$36, \$33, \$30, R, R
80	\$300 Small Junior Handy Hunter 15 & Under O/F	\$90, \$66, \$45, \$36, \$33, \$30, R, R
81	\$300 Small Junior Hunter 15 & Under U/S	\$90, \$66, \$45, \$36, \$33, \$30, R, R

### Small Junior Hunter 16-17

Division Fee: \$225. Fences 3'6"

82, 83, 84	\$300 Small Junior Hunter 16-17 O/F	\$90, \$66, \$45, \$36, \$33, \$30, R, R
85	\$300 Small Junior Handy Hunter 16-17 O/F	\$90, \$66, \$45, \$36, \$33, \$30, R, R
86	\$300 Small Junior Hunter 16-17 U/S	\$90, \$66, \$45, \$36, \$33, \$30, R, R

### Large Junior Hunter 15 & Under

Division Fee: \$225. Fences 3'6"

87, 88, 89	\$300 Large Junior Hunter 15 & Under O/F	\$90, \$66, \$45, \$36, \$33, \$30, R, R
90	\$300 Large Junior Handy Hunter 16-17 O/F	\$90, \$66, \$45, \$36, \$33, \$30, R, R
91	\$300 Large Junior Hunter 15 & Under U/S	\$90, \$66, \$45, \$36, \$33, \$30, R, R

### Large Junior Hunter 16-17

Division Fee: \$225. Fences 3'6"

92, 93, 94	\$300 Large Junior Hunter 16-17 O/F	\$90, \$66, \$45, \$36, \$33, \$30, R, R
95	\$300 Large Junior Handy Hunter 16-17 O/F	\$90, \$66, \$45, \$36, \$33, \$30, R, R
96	\$300 Large Junior Hunter 16-17 U/S	\$90, \$66, \$45, \$36, \$33, \$30, R, R

### Junior Hunter 3'3"

Division Fee: \$225.

97, 98, 99	\$300 Junior Hunter 3'3" O/F	\$90, \$66, \$45, \$36, \$33, \$30, R, R
100	\$300 Junior Handy Hunter 3'3" O/F	\$90, \$66, \$45, \$36, \$33, \$30, R, R
101	\$300 Junior Hunter 3'3" U/S	\$90, \$66, \$45, \$36, \$33, \$30, R, R

# CHAGRIN VALLEY HUNTER JUMPER CLASSIC

JULY 11-16, 2017

## WCHR – “PREMIER” RATED HUNTERS

### Small / Medium Green Pony Hunter

Division Fee: \$150. Fences 2'3" / 2'6"

102,103, 104	\$100 Sm/Med Green Pony Hunter O/F	\$30, \$22, \$15, \$12, \$11, \$10, R, R
105	\$100 Sm/Med Green Pony Hunter Conformation O/F	\$30, \$22, \$15, \$12, \$11, \$10, R, R
106	\$100 Sm/Med Green Pony Hunter U/S	\$30, \$22, \$15, \$12, \$11, \$10, R, R

### Large Green Pony Hunter

Division Fee: \$150. Fences 2'9"

107, 108, 109	\$100 Large Green Pony Hunter O/F	\$30, \$22, \$15, \$12, \$11, \$10, R, R
110	\$100 Large Green Pony Hunter Conformation O/F	\$30, \$22, \$15, \$12, \$11, \$10, R, R
111	\$100 Large Green Pony Hunter U/S	\$30, \$22, \$15, \$12, \$11, \$10, R, R

### Small Pony Hunter

Division Fee: \$225. Fences 2'3"

112	\$300 Small Pony Conformation Hunter O/F	\$90, \$66, \$45, \$36, \$33, \$30, R, R
113	\$300 Small Pony Handy Hunter O/F	\$90, \$66, \$45, \$36, \$33, \$30, R, R
114, 115	\$300 Small Pony Hunter O/F	\$90, \$66, \$45, \$36, \$33, \$30, R, R
116	\$300 Small Pony Hunter U/S	\$90, \$66, \$45, \$36, \$33, \$30, R, R

### Medium Pony Hunter

Division Fee: \$225. Fences 2'6"

117	\$300 Medium Pony Conformation Hunter O/F	\$90, \$66, \$45, \$36, \$33, \$30, R, R
118	\$300 Medium Pony Handy Hunter O/F	\$90, \$66, \$45, \$36, \$33, \$30, R, R
119, 120	\$300 Medium Pony Hunter O/F	\$90, \$66, \$45, \$36, \$33, \$30, R, R
121	\$300 Medium Pony Hunter U/S	\$90, \$66, \$45, \$36, \$33, \$30, R, R

### Large Pony Hunter

Division Fee: \$225. Fences 3'

122	\$300 Large Pony Conformation Hunter O/F	\$90, \$66, \$45, \$36, \$33, \$30, R, R
123	\$300 Large Pony Handy Hunter O/F	\$90, \$66, \$45, \$36, \$33, \$30, R, R
124, 125	\$300 Large Pony Hunter O/F	\$90, \$66, \$45, \$36, \$33, \$30, R, R
126	\$300 Large Pony Hunter U/S	\$90, \$66, \$45, \$36, \$33, \$30, R, R

### GRAND CHAMPIONS

In the case of a tie, the horse with the most points over fences shall be declared the Grand Champion.

**GRAND HUNTER CHAMPION**

**GRAND PONY HUNTER CHAMPION**

**GRAND AMATEUR OWNER CHAMPION**

**GRAND ADULT AMATEUR CHAMPION**

**GRAND JUNIOR HUNTER CHAMPION**

**GRAND CHILDREN'S HUNTER CHAMPION**

# CHAGRIN VALLEY HUNTER JUMPER CLASSIC

JULY 11-16, 2017

## WCHR – “C” RATED HUNTERS

### **Adult Amateur Hunter 18-35**

Class Fee: \$40. Division Fee: \$200. Fences 3'

127, 128, 129, 130 Adult Amateur Hunter 18-35 O/F

Trophy & Eight Ribbons

131 Adult Amateur Hunter 18-35 U/S

Trophy & Eight Ribbons

### **Adult Amateur Hunter 36 & Over sponsored by Laurel Tree Advisors**

Class Fee: \$40. Division Fee: \$200. Fences 3'

132, 133, 134, 135 Adult Amateur Hunter 36 & Over O/F

Trophy & Eight Ribbons

136 Adult Amateur Hunter 36 & Over U/S

Trophy & Eight Ribbons

### **Children's Hunter 14 & Under sponsored by Tyler-Stone Wealth Management**

Class Fee: \$40. Division Fee: \$200. Fences 3'

137, 138, 139, 140 Children's Hunter 14 & Under O/F

Trophy & Eight Ribbons

141 Children's Hunter 14 & Under U/S

Trophy & Eight Ribbons

### **Children's Hunter 15-17 sponsored by Tyler-Stone Wealth Management**

Class Fee: \$40. Division Fee: \$200. Fences 3'

142, 143, 144, 145 Children's Hunter 15-17 O/F

Trophy & Eight Ribbons

146 Children's Hunter 15-17 U/S

Trophy & Eight Ribbons

### **Children's Hunter Pony – Small / Medium**

Class Fee: \$40. Division Fee: \$200. Fences 2'

147, 148, 149, 150 Sm/Med Children's Hunter Pony O/F

Trophy & Eight Ribbons

151 Sm/Med Children's Hunter Pony U/S

Trophy & Eight Ribbons

### **Children's Hunter Pony – Large**

Class Fee: \$40. Division Fee: \$200. Fences 2'6"

152, 153, 154, 155 Large Children's Hunter Pony O/F

Trophy & Eight Ribbons

156 Large Children's Hunter Pony U/S

Trophy & Eight Ribbons

USHJA HUNTER SECTIONS ARE OPEN TO ALL HORSES, PONIES AND RIDERS WHERE OTHERWISE ELIGIBLE.

### **USHJA Hunter 2'**

Class Fee: \$40

157, 158, 159 USHJA Hunter 2' O/F

Trophy & Eight Ribbons

160 USHJA Hunter 2' U/S

Trophy & Eight Ribbons

### **USHJA Hunter 2'3"**

Class Fee: \$40

161, 162, 163 USHJA Hunter 2'3" O/F

Trophy & Eight Ribbons

164 USHJA Hunter 2'3" U/S

Trophy & Eight Ribbons

# CHAGRIN VALLEY HUNTER JUMPER CLASSIC

## JULY 11-16, 2017

### WCHR – “C” RATED HUNTERS

#### USHJA Hunter 2’6”

Class Fee: \$40

165, 166, 167  
168

USHJA Hunter 2’6” O/F  
USHJA Hunter 2’6” U/S

Trophy & Eight Ribbons  
Trophy & Eight Ribbons

#### USHJA Hunter 2’9”

Class Fee: \$40

169, 170, 171  
172

USHJA Hunter 2’9” O/F  
USHJA Hunter 2’9” U/S

Trophy & Eight Ribbons  
Trophy & Eight Ribbons

#### USHJA Hunter 3’

Class Fee: \$40

173, 174, 175  
176

USHJA Hunter 3’ O/F  
USHJA Hunter 3’ U/S

Trophy & Eight Ribbons  
Trophy & Eight Ribbons

### UNRATED HUNTERS

#### Low Children’s Hunter

Class Fee: \$40. Division Fee: \$200.

Open to horses ridden by juniors who have limited experience over fences. To be judged on performance and soundness with an emphasis on manners. Fences 2’6”

177, 178, 179, 180  
181

Low Children’s Hunter 2’6” O/F  
Low Children’s Hunter U/S

Trophy & Six Ribbons  
Trophy & Six Ribbons

#### Low Adult Hunter *in Honor & Memory of Dr. Cyndi Roller*

Class Fee: \$40. Division Fee: \$200.

Open to horses ridden by adults who have limited experience over fences. To be judged on performance and soundness with an emphasis on manners. Fences 2’6”

182, 183, 184, 185  
186

Low Adult Hunter 2’6”  
Low Adult Hunter U/S

Trophy & Six Ribbons  
Trophy & Six Ribbons

#### Chagrin Open Hunter 2’6”

Class Fee: \$40.

187, 188  
189

Chagrin Open Hunter 2’6” O/F  
Chagrin Open Hunter 2’6” U/S

Trophy & Six Ribbons  
Trophy & Six Ribbons

# CHAGRIN VALLEY HUNTER JUMPER CLASSIC

## JULY 11-16, 2017

### UNRATED HUNTERS

#### Take2 Thoroughbred Hunter

Class Fee: \$50

Division Fee: \$250



Open to Thoroughbreds only that are registered with USHJA and have either their Jockey Club certificate of registration, a lip tattoo, or a letter from the Jockey Club verifying the horse's identity. Proof of registration must be presented at time of entry. Fences 3'.

190, 191, 192, 193	\$200 Take2 Thoroughbred Hunter O/F	\$60, \$44, \$30, \$24, \$22, \$20, R, R
194	\$200 Take2 Thoroughbred Hunter U/S	\$60, \$44, \$30, \$24, \$22, \$20, R, R

#### Opportunity Short Stirrup Hunter

Entry Fee: \$35 per class.

Open to all riders 11 years of age and under. Riders may not cross enter into any other division. There will be no oxers or in and out. Fences 2'.

201, 202	Opportunity Short Stirrup Hunter O/F	Trophy & Six Ribbons
203	Opportunity Short Stirrup Hunter U/S	Trophy & Six Ribbons

#### Opportunity Cross Rails Hunter

Entry Fee: \$35 per class.

204, 205	Opportunity Cross Rails Hunter O/F	Trophy & Six Ribbons
206	Opportunity Cross Rails Hunter U/S	Trophy & Six Ribbons

#### Hunter Warm Ups

Entry Fee: \$45 per class. Blue / Red Ribbon

*Time Permitting.* Hunter Warm Up classes will run concurrently with and at the same height as corresponding classes. Blue and Red ribbons will be awarded based on numerical scores at judges' discretion.

290-299	Hunter Warm Ups
---------	-----------------

### HUNTER & PONY BREEDING

Entry Fee: \$35 per class.

All Hunter Breeding classes will be held in the first available ring on Wednesday. Trophy & Six Ribbons per class.

207	Yearlings
208	Two Year Olds
209	Three Year Olds
210	Best Young Horse
211	Yearling Pony
212	Two Year Old Pony
213	Three Year Old Pony
214	Best Young Pony

# CHAGRIN VALLEY HUNTER JUMPER CLASSIC

JULY 11-16, 2017

## EQUITATION & MEDAL CLASSES

### Equitation Classes

Entry Fee: \$40 per class except where noted. Trophy & Six Ribbons per class.

- 301 Opportunity Short Stirrup Equitation On the Flat - \$35
- 302 Opportunity Short Stirrup Equitation 2' O/F - \$35
- 303 Leadline - \$20
- 304 Walk Trot Poles Equitation On the Flat - \$35
- 305, 306 Walk Trot Poles Equitation - \$35
- 307 Opportunity Limit Equitation On the Flat - \$35
- 308, 309 Opportunity Limit Equitation 2' O/F - \$35
- 310 Jumper Seat Equitation 1.0m
- 311 14 & Under Equitation On the Flat
- 312 14 & Under Equitation O/F – Fences not to exceed 2'6"
- 313 15-17 Equitation On the Flat
- 314 15-17 Equitation O/F - Fences not to exceed 3'6"
- 315 Adult Equitation On the Flat
- 316 Adult Equitation O/F – Fences not to exceed 3'
- 317 Children's Equitation On the Flat
- 318 Children's Equitation O/F Fences not to exceed 3'
- 319 Pony Equitation On the Flat

### Medal Classes

Entry Fee: \$50 per class. Trophy & Six Ribbons per class.

- 320 Ohio PHA Hunter Seat Medal  
Fences 3'6". Open to all Junior members of the USEF and Equine Canada who have never competed in a National Equitation Final with fences at 3'6". OPHA members will receive points toward the Fox Smith Medal.
- 321 Marshall & Sterling / US Pony Medal
- 322 Dick Gascoigne Memorial Pony Medal
- 323 Pessoa / US Hunter Seat Medal
- 324 ASPCA/NHSAA Maclay Horsemanship
- 325 Platinum Performance / USEF Show Jumping TalentSearch 1\*  
*For complete class specifications for all remaining Medal Classes, please go to [www.ryegate.com](http://www.ryegate.com)*
- 326 WIHS Equitation – Hunter Phase
- 327 WIHS Equitation – Jumper Phase
- 327.1 WIHS Equitation Overall (no entry fee)
- 328 WIHS Pony Equitation
- 329 Taylor Harris Insurance Services (THIS) National Children's Medal
- 330 Ariat National Adult Medal *sponsored by Buckeye Veterinary Services*

# CHAGRIN VALLEY HUNTER JUMPER CLASSIC

JULY 11-16, 2017

## JUMPERS

- Championships will be determined by points in all sections. Classics in all divisions will have bonus points.
- NO POLING OR USE OF OFFSETS WILL BE PERMITTED AT ANY TIME.
- Horses MUST be declared for the class(es) PRIOR TO THE CLOSE OF THE SHOW OFFICE the day BEFORE the class(es) are held, unless otherwise specified.
- Please note that some classes require a NOMINATION fee.
- Should sections need to be combined or divided; they will be conducted in accordance to USEF rules.

All SCHOOLING JUMPER classes will be scored under Table II without a jump-off. Horses that are clear in the first round will remain tied for first place with all other horses that are clear. Blue ribbons will be presented to all competitors with a clean first round.

### Open Schooling Jumper

Entry Fee: \$45 per class. No nomination fee.

401, 402, 403                      Schooling Jumper, 85m to .90m.

### Low Schooling Jumper

Entry Fee: \$45 per class. No nomination fee.

404, 405, 406, 407, 408      Low Schooling Jumper, 1.0m, II

### Medium Schooling Jumper

Entry Fee: \$45 per class. No nomination fee.

409, 410                          Medium Schooling Jumper, 1.07m, II

### High Schooling Jumper

Entry Fee: \$45 per class. No nomination fee.

411, 412, 413                  High Schooling Jumper, 1.20m, II

### Intermediate Children's Jumper *sponsored by S.A. Comunale Co.*

Entry Fee: \$45 per class. \$55 for Classic. No nomination fee.

Open to Juniors. Same horse/rider combination not eligible for any other jumper class above 1.05m. Fences .85m to .90m

414                                  Intermediate Children's Jumper II, 2(b)

415, 416                          Intermediate Children's Jumper II, Sec. 1

610                                  \$1,000 Intermediate Children's Jumper Classic (see Jumper Classics for specs.)

### Intermediate Adult Jumper *sponsored by S.A. Comunale Co.*

Entry Fee: \$45 per class. \$55 for Classic. No nomination fee.

Open to Juniors. Same horse/rider combination not eligible for any other jumper class above 1.05m. Fences .85m to .90m

417                                  Intermediate Adult Jumper II, 2(b)

418, 419                          Intermediate Adult Jumper II, Sec. 1

611                                  \$1,000 Intermediate Adult Jumper Classic (see Jumper Classics for specs.)

# CHAGRIN VALLEY HUNTER JUMPER CLASSIC

JULY 11-16, 2017

## JUMPERS

### Low Children's Jumper

Entry Fee: \$45 per class. No nomination fee.

Open to Juniors. Same horse/rider combination not eligible for any other jumper class above 1.05m. Fences 1.0m

- 420 Low Children's Jumper II, Sec. 1  
421 Low Children's Jumper II, 2(b)  
613 \$2,500 Combined Low Children's / Adult Jumper Classic II, 2(b)  
*in memory of James & Audrey Millar* (see Jumper Classics for specs.)

### Low Adult Jumper

Entry Fee: \$45 per class. No nomination fee.

Open to Adult Amateurs. Same horse/rider combination not eligible for any other jumper class above 1.05m. Fences 1.0m

- 423 Low Adult Jumper II, Sec 1  
424 Low Adult Jumper II, 2(b)  
613 \$2,500 Combined Low Adult Jumper Classic II, 2(b) *in memory of James & Audrey Millar*  
(see Jumper Classics for specs.)

### Children's Jumper

Entry Fee: \$40 per class. \$85 for Classic. Nomination Fee: \$175

To be ridden by a Junior exhibitor. Please see ZONE 5 Specs for more information. Fences 1.10m.

- 426 \$300 Children's Jumper - II, 2(b) \$75, \$55, \$50, \$45, \$40, \$40, R, R  
427, 428 \$300 Children's Jumper - II, Sec. 1 \$75, \$55, \$50, \$45, \$40, \$40, R, R  
607 \$1500 NAL / WIHS Children's Jumper Classic (See Jumper Classics for specs.)

### Adult Jumper

Entry Fee: \$40 per class. \$120 for Classic. Nomination Fee: \$175

To be ridden by an Adult Amateur exhibitor. Please see ZONE 5 Specs for more information. Fences 1.10m.

- 429 \$300 Adult Jumper - II, 2(b) \$75, \$55, \$50, \$45, \$40, \$40, R, R  
430, 431 \$300 Adult Jumper - II, Sec. 1 \$75, \$55, \$50, \$45, \$40, \$40, R, R  
608 \$1500 NAL / WIHS Adult Jumper Classic (See Jumper Classics for specs.)

### 1.20m Low Junior / Amateur Owner Jumper

Entry Fee: \$60 per class. \$200 for Classic. \$175 Nomination Fee required. Fences 1.20m.

- 432 \$500 1.20m Low Junior/Amateur Jumper - II, 2(b) \$125, \$105, \$75, \$70, \$65, \$60, R, R  
433, 434 \$500 1.20m Low Junior/Amateur Jumper - II, Sec. \$125, \$105, \$75, \$70, \$65, \$60, R, R  
606 \$5,000 NAL Low Junior / Amateur Jumper Classic (See Jumper Classics for specs.)

### 1.30m Medium Junior / Amateur Owner Jumper

Entry Fee: \$80 per class. \$200 for Classic. \$175 Nomination Fee. Fences 1.30m.

- 435 \$1,000 1.30m Medium Junior/Amateur Jumper - II, 2(b) \$365, \$240, \$125, \$100, \$90, \$80, R, R  
436, 437 \$1,000 1.30m Medium Junior/Amateur Jumper - II, Sec. 1 \$365, \$240, \$125, \$100, \$90, \$80, R, R  
605 \$5,000 Medium Junior/Amateur Owner Jumper Classic (See Jumper Classics for specs.)



# CHAGRIN VALLEY HUNTER JUMPER CLASSIC

JULY 11-16, 2017

## JUMPERS

### 1.40m High Junior / Amateur Owner Jumper

Entry Fee: \$80 per class. \$200 for Classic. \$175 Nomination Fee. Fences 1.40m.

438	\$1,000 1.40m High Junior/Amateur Jumper - II, 2(b)	\$365, \$240, \$125, \$100, \$90, \$80, R, R
439, 440	\$1,000 1.40m High Junior/Amateur Jumper - II, Sec. I	\$365, \$240, \$125, \$100, \$90, \$80, R, R
604	\$5,000 High Junior/Amateur Owner Jumper Classic (See Jumper Classics for specs.)	

### Young Jumper Championships

To be eligible to participate in YJC classes all horses must be in possession of valid registration papers issued by a breed registry, a valid National or FEI Passport or a Nomination Certificate issued by International Jumper Futurity. Proof of registry must be presented prior to the class. Only horses recorded with the YJC prior to competing in these classes will earn scores toward eligibility for League Final events. Recording form will be available from the show office or at [www.youngjumpers.com](http://www.youngjumpers.com). Draw reins and standing martingales are not permitted for YJC classes.

Entry Fee: \$65 per class - No nomination fee.

441	5 Yr Old Young Jumper 1.15m II	Ribbons
442	5 Yr Old Young Jumper Qualifier 1.15m II, 2(b)	Ribbons
443	\$500 6 Yr. Old Young Jumper 1.25m II, Sec. 1	\$130, \$90, \$80, \$70, \$65, \$65, R, R
444	\$500 6 Yr Old Young Jumper Qualifier 1.25m II, 2(b)	\$130, \$90, \$80, \$70, \$65, \$65, R, R
445	\$500 7 Yr Old Young Jumper Qualifier 1.30m II, Sec. 1	\$130, \$90, \$80, \$70, \$65, \$65, R, R
446	\$500 7 Yr Old Young Jumper Qualifier 1.30m II, 2(b)	\$130, \$90, \$80, \$70, \$65, \$65, R, R

### Take2 Thoroughbred Jumpers



Open to Thoroughbreds only that have either their Jockey Club certificate of registration, a lip tattoo, or a letter from the Jockey Club verifying the horse's identity. Proof of registration must be presented at time of entry

Entry Fee: \$40 per class. Nomination Fee NOT required. Fences 1.0m

447	\$300 Take2 Thoroughbred Jumper II, 2(b)	\$70, \$55, \$50, \$45, \$40, \$40, R, R
448, 449	\$300 Take2 Thoroughbred Jumper II, Sec. 1	\$70, \$55, \$50, \$45, \$40, \$40, R, R

### Open Jumper

\$175. Nomination Fee required.

450	\$500 1.25m Open Jumper II, 2(b) – Entry Fee \$45	\$160, \$100, \$85, \$60, \$50, \$45, R, R
451	\$500 1.25m Open Jumper II, Sec. 1 – Entry Fee \$45	\$160, \$100, \$85, \$60, \$50, \$45, R, R
452	\$750 1.30m Open Jumper II, 2(b) – Entry Fee \$55	\$200, \$130, \$100, \$80, \$70, \$60, \$55, \$55
453, 454	\$750 1.30m Open Jumper II, Sec. 1 – Entry Fee \$55	\$200, \$130, \$100, \$80, \$70, \$60, \$55, \$55
455, 456	\$1,000 1.35m Open Jumper II, Sec.1 – Entry Fee \$80	\$365, \$240, \$125, \$100, \$90, \$80, R, R

# CHAGRIN VALLEY HUNTER JUMPER CLASSIC

## JULY 11-16, 2017

### FEATURED HUNTER CLASSES & CLASSICS

#### 501 \$20,000 USHJA International Hunter Derby

Entry Fee: \$750 +\$50 USHJA fee

Complete class specifications available in Show Office or see [www.ushja.org](http://www.ushja.org).

1st \$6,000, 2nd \$4,400, 3rd \$2,600, 4th \$1,600, 5th \$1,200, 6th \$1,000, 7th \$800, 8th \$600, 9th \$600, 10th \$400, 11th \$400, 12th \$400

#### 502 \$5,000 USHJA National Hunter Derby *sponsored by Ohio CAT*

Entry Fee: \$250 + \$25 to USHJA

Complete class specifications available in Show Office or see [www.ushja.org](http://www.ushja.org).

1st \$1,500, 2nd \$1,100, 3rd \$650, 4th \$400, 5th \$300, 6th 250, 7th \$200, 8th \$150, 9th \$150, 10th \$100, 11th \$100, 12th \$100  
& Ribbons for High Scoring Junior and Amateur Riders.

#### 503 \$10,000 Billie H. Steffee Future Hunter Stake

Entry Fee: \$300

7 Yrs & Under - Fences 3'6"; 6 Yrs & Under - Fences 3'3"; 5 Yrs & Under - Fences 3'0".

Two round classic format. The top 12 horses from the first round will come back in order of low to high score in their perspective heights. Winner Presented with Memorial Trophy, Cooler

1st \$3,000, 2nd \$2,200, 3rd \$1,300, 4th \$800, 5th \$600, 6th \$500, 7th \$400, 8th \$300, 9th \$300, 10th \$200, 11th \$200, 12th \$200

#### 504 \$1,000 Green Hunter 3'3 Incentive Stake *sponsored by Key Private Bank*

Entry Fee - \$100 plus \$20 USHJA fee. \$50 per entry will be added to the total prize money

\$300, \$220, \$130, \$80, \$60, \$50, \$40, \$30, \$30, \$20, \$20, \$20

#### 505 \$1,000 Green Hunter 3'0 Incentive Stake

Entry Fee - \$100 plus \$20 USHJA fee. \$50 per entry will be added to the total prize money

\$300, \$220, \$130, \$80, \$60, \$50, \$40, \$30, \$30, \$20, \$20, \$20

Horses must be enrolled in the USHJA Green Hunter Incentive Program and pay the annual enrollment fee to participate in the Pre-Green Incentive Stake. Additionally, horses must be registered with USHJA and recorded with USEF to participate. Horses must be enrolled in the Green Hunter Incentive Program prior to competing in a Green Hunter Incentive Stake class. See [www.ushja.org](http://www.ushja.org) for Class Specifications.

#### 506 \$750 NAL / WIHS Adult Hunter Classic

Entry Fee: \$75

Two Round Classic. See Zone 5 Specifications for eligibility. Horse must have competed in TWO Adult Hunter Classes O/F at the show to be eligible. The same rider must compete in both rounds of the Classic.

\$225, \$165, \$115, \$65, \$50, \$40, \$25, \$20, \$15, \$10, \$10, \$10

#### 507 \$750 NAL/WIHS Children's Hunter Classic

Entry Fee: \$75

Two Round Classic. See Zone 5 Specifications for eligibility. Horse must have competed in TWO Children's Hunter Classes O/F at the show. The same rider must compete in both rounds of the Classic.

\$225, \$165, \$115, \$65, \$50, \$40, \$25, \$20, \$15, \$10, \$10, \$10

# CHAGRIN VALLEY HUNTER JUMPER CLASSIC

JULY 11-16, 2017

## FEATURED HUNTER CLASSES & CLASSICS

### 508 \$1,500 Buckeye Veterinary Services Pony Hunter Classic

Entry Fee: \$150

Open to all pony & riders that have competed in two O/F classes in respective section. Two Round Competition. The First Round will consist of the last over fence class in the ponies' respective divisions. Top 12 scores compete in reverse order.

\$450, \$330, \$230, \$130, \$100, \$80, \$50, \$40, \$30, \$20, \$20, \$20

## FEATURED JUMPER CLASSES & CLASSICS

### 601 \$50,000 Cleveland Grand Prix

Entry Fee: \$700

Nomination fee required.

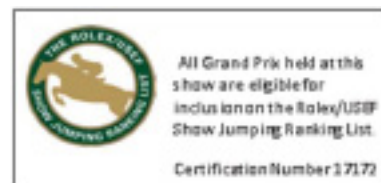
Table II Sec. 2(a) Time First Jump-Off

1.50m National Level

\$15,000, \$11,000, \$6,500, \$4,000, \$3,000, \$2,500, \$2,000, \$1,500, \$1,500, \$1,000, \$1,000, \$1,000

Declarations to show must be made no later than Friday, July 14, 2017. No entries will be accepted after 12:00 Noon Saturday, July 15, 2017. In order to compete in the Cleveland Grand Prix and be included on the Ranking List, horses must be in the secured stabling area 24 hours prior to the start of the scheduled class. Horses entered in this class must wear the back number assigned to them for that class at all times upon leaving the secured stable area. Any schooling for these classes shall be held under the inspection of the Show Steward/Schooling Supervisor in the designated schooling areas. Designated schooling areas and schooling hours will be posted in the Show Office. Any horse/rider combination(s) found in violation of this rule shall be disqualified from the class in which the violation occurred and shall forfeit the entry fee.

Formal Attire Required. Jump order will be drawn. Riders are required to salute upon entering the ring.



### 602 \$10,000 Welcome Stake presented by Wolf Creek Equestrian Center & The Shaughnessy Family

Entry Fee: \$300

Nomination fee required.

Table II Sec. 2(b) Fences 1.40m

\$3,000, \$2,200, \$1,300, \$875, \$675, \$575, \$425, \$350, \$300, \$300

Formal Attire Required. Jump order will be drawn.

### 603 \$5,000 Open Jumper Speed Stake

Entry Fee: \$200

Nomination fee required.

Table III – Fences 1.35m

\$1,500, \$1,000, \$600, \$450, \$350, \$250, \$250, \$200, \$200, \$200

Formal Attire Required. Jump order will be drawn.

# CHAGRIN VALLEY HUNTER JUMPER CLASSIC

JULY 11-16, 2017

## FEATURED JUMPER CLASSES & CLASSICS

### 604 \$5,000 1.40m High Junior/Amateur Owner Jumper Classic

#### Member Event of the Show Jumping Hall of Fame Series

Entry Fee: \$200

Nomination fee required.

Table II, Sec.2(b)

To be eligible, the horse must have competed in at least one other 1.40m High Junior/Amateur class at this show.

Horse/Rider combination MAY NOT have competed in the Low 1.20m Jr./AO section at this show. Classic WILL

count towards division championship and receive bonus points. FORMAL ATTIRE REQUIRED.

**\$1,500, \$1,100, \$650, \$475, \$350, \$225, \$200, \$175, \$175, \$150, R, R**

### 605 \$5,000 NAL 1.20m Low Junior/Amateur Owner Jumper Classic

Entry Fee: \$200

Nomination fee required.

Table II, Sec. 2(b)

To be eligible, the horse must have competed in at least one other 1.20m Low Junior/Amateur class at this show.

Horse/Rider combination MAY NOT have competed in the 1.40m High Jr./AO section at this show. Classic WILL

count towards division championship and receive bonus points. FORMAL ATTIRE REQUIRED.

**\$1,500, \$1,100, \$650, \$475, \$350, \$225, \$200, \$175, \$175, \$150, R, R**

### 606 \$5,000 1.30m Medium Junior/Amateur Owner Jumper Classic

Entry Fee: \$200

Nomination fee required.

Table II, Sec.2(b)

To be eligible, the horse must have competed in at least one other 1.30m Medium Junior/Amateur class at this

show. Classic WILL count towards division championship and receive bonus points. FORMAL ATTIRE

REQUIRED.

**\$1,500, \$1,100, \$650, \$475, \$350, \$225, \$200, \$175, \$175, \$150, R, R**

### 607 \$2,500 NAL / WIHS Adult Jumper Classic

Entry Fee: \$120

Nomination fee required.

Table II, Sec. 2(b) Fences 1.15m

Horse/Rider combination must have competed in at least one other class in the Adult Jumper Section.

Please see ZONE 5 Specs for complete specifications. Classic WILL count towards division championship and

receive bonus points. Proper attire required.

**\$750, \$550, \$325, \$230, \$200, \$185, \$140, \$120**

### 608 \$1500 NAL / WIHS Children's Jumper Classic

Entry Fee: \$85

Nomination fee required.

Table II, Sec. 2(b) Fences 1.15m

Horse/Rider combination must have competed in at least one other class in the Children's Jumper

Section. Please see ZONE 5 Specs for more information. Classic WILL count towards division championship and

receive bonus points. Proper attire required.

**\$450, \$300, \$210, \$150, \$120, \$95, \$90, \$85**

# CHAGRIN VALLEY HUNTER JUMPER CLASSIC

JULY 11-16, 2017

## FEATURED JUMPER CLASSES & CLASSICS

**609 \$2,500 Pro - Junior/Amateur Jumper sponsored by the Morrow Family Foundation**

Entry Fee: \$120

JR/AO riders will jump a 1.10m - 1.15m course as a Table II round. Scored on clear round.

PRO riders will jump the same 1.10m - 1.15m course as a Table II Sec. 2.1 round.

**\$750, \$550, \$325, \$230, \$200, \$185, \$140, \$120**

**610 \$1,000 Intermediate Children's Jumper Classic sponsored by S.A. Comunale Co.**

Entry Fee: \$55. Fences .90m

Open to Juniors. Cannot cross enter into regular Children's Jumper Section. Same horse/rider combination not eligible for any other jumper class above 1.05m. Must compete in one other class in section to be eligible for Classic. Classic WILL count towards division championship and receive bonus points. Proper attire required.

**\$300, \$200, \$150, \$100, \$70, \$65, \$60, \$55**

**611 \$1,000 Intermediate Adult Jumper Classic sponsored by S.A. Comunale Co.**

Entry Fee: \$55. Fences .90m

Open to Adult Amateurs. Cannot cross enter into regular Adult Jumper Section. Same horse/rider combination not eligible for any other jumper class above 1.05m. Must compete in one other class in section to be eligible for Classic. Classic WILL count towards division championship and receive bonus points. Proper attire required.

**\$300, \$200, \$150, \$100, \$70, \$65, \$60, \$55**

**612 \$1,500 Gambler's Choice**

Entry Fee: \$150. Fences .1.0m – 1.20m. Joker 1.30m

To be run under FEI Article 270. Joker not to exceed 1.30m Proper attire required.

**\$450, \$300 \$250, \$200, \$150, \$150, R, R**

**613 \$2,500 Low Children's / Adult Jumper Classic in memory of James and Audrey Millar**

Entry Fee: \$120. Fences 1.0m.

Open to Juniors and Adult Amateurs. Same horse/rider combination not eligible for any other jumper Class above 1.05m. Must compete in one other class in Low Children's Jumper or Low Adult Jumper section to be eligible for Classic. Classic WILL count towards division championship and receive bonus points. Proper attire required.

**\$750, \$550, \$325, \$230, \$200, \$185, \$140, \$120**

# CHAGRIN VALLEY HUNTER JUMPER CLASSIC

## JULY 11-16, 2017

### THE SARAH ALLISON STEFFEE SPORTSMANSHIP TROPHY

#### 700 The Sarah Allison Steffee Sportsmanship Trophy

*Presented By Family & Friends, In Memory of Sarah Allison Steffe*

No Entry Fee

Trophy, Champion Ribbon

To be awarded to the Junior/Young Rider, who has not reached their 21st birthday under USEF rules, during the Chagrin Valley Hunter Jumper Classic who exhibits the highest degree of exemplary personal conduct with respect to good sportsmanship, manners, dress, and consideration of others including his own and other horses. Winner to be chosen by a special panel of secret judges appointed by the horse show committee. To be considered, entries must be entered in this class. Exhibitors entered in this class are required to wear a numbered arm band at all times while on the grounds in riding attire, whether exhibiting or not at the time. Failure to wear arm band will incur a major demerit for first offense. Second offense will constitute elimination. Award presentation to take place on Saturday afternoon, July 15, in the Jumper Ring

#### Past Winners



2000 Aya Kubota	2009 Kristen Dengler
2001 Stephanie Liff	2010 Katherine Newman
2002 Lori Snetsinger	2011 Chelsea Hus
2003 Emily Kohn	2012 Madison Arani
2004 Erin Albert	2013 Morgan Flynn
2005 Rachel Winegar	2015 Anna Elghanayan
2006 Grace Socha	2016 Jacob Harris
2007 Kacey McCann	
2008 Spencer Smith	

#### 701 \$1000 Turn Out Award & Grooms Class

*sponsored by Elizabeth Colavincenzo-Swann with Blue Ribbon Braids & Mary Barton with All Knotted Up Equine Braids*

No Entry Fee

Participation: Braiders & grooms shall bring a "show ring ready," fully turned out, tacked and/or booted horse suitable for a hunter, jumper or equitation class to the ring. Braiders, grooms and their horses will be judged on overall cleanliness, appropriate use of tack, application of boots or wraps, neatness of clipping, suitability of braids for class, overall presentation, and grooming box contents. Braiders, grooms or trainers must fill out a short form prior to class in show office. To be awarded immediately before the start of the \$10,000 Billie H. Steffee Future Hunter Stake.

#### \$650 LEADING TRAINER & HIGH POINT BARN AWARD

*sponsored by Buckeye Nutrition*

Points from all ribbons won by horses and riders under each trainer's name for both the Rated and Unrated shows will accumulate for this award. Championships, reserve championships, warm up classes, blue ribbon jumper classes, classics, Derbies, and team class points are excluded.

# CHAGRIN VALLEY HUNTER JUMPER CLASSIC

## JULY 11-16, 2017

### HORSE & HOUND RELAY EXHIBITION

#### 702 \$5,000 RAM TRUCK & DEACON'S Horse & Hound Relay Exhibition Class *presented by Geauga Feed & Grain Supply, July 14, 2017 after 5:30 p.m.*

\$2500 .85m: Limited to 8 horse and dog teams. / \$2500 1.10m: Limited to 8 horse and dog teams.

Entry Fee: \$50.

**Proceeds from the Horse and Hound entry fees to benefit Geauga County Humane Society's Rescue Village.**

*Deadline for all entries is Monday, July 10 .*

Open to all horses and riders. Course designed to accommodate dog agility jumps. Riders are randomly paired with a dog agility team. Horse team rides first and when team breaks the end timers, the dog team goes. Scores are averaged (both sets of scores based on time and faults). This is an entertainment class, so spectators will expect to see you perform and your canine or equine partner will expect you to participate! Offered at 2'6" and 3'3" for equine teams and 16" and under and 20" and above for canine teams. You will be entered in the class based on the date on your entry form.

**Prizes per class (Classes pinned separately. Prize money split between dog and horse teams.):**

**1st: \$390 2nd: \$270 3rd: \$240 4th: \$210 5th: \$195 6th: \$195 7th: R 8th: R**

## Beside you every step of the way.

Whether it's helping clients find ways to grow, protect, and transition their wealth or providing support for organizations that improve lives and communities, we're here to guide you on your financial journey. We have the expertise to find the right path forward. Key Private Bank is proud to support Chagrin Hunter Jumper Classic charity horse show.

Contact Ed Donnelly at  
216-689-8736 or go to [key.com/kpb](http://key.com/kpb) today.

Bank and trust products from KeyBank National Association, Member FDIC and Equal Housing Lender.  
Investment products are:

**NOT FDIC INSURED • NOT BANK GUARANTEED • MAY LOSE VALUE • NOT A DEPOSIT  
NOT INSURED BY ANY FEDERAL OR STATE GOVERNMENT AGENCY**

Key.com is a federally registered service mark of KeyCorp. ©2017  
KeyCorp. **KeyBank is Member FDIC.** ADL8136 151023-4409631

**Key Private Bank**  


# 2017 CHAGRIN HUNTER JUMPER CLASSIC - PREMIER / JUMPER 4\*

WCHR, OPHA, WPA PHA, KHJA, IHJA, OHJA, MoHJO, VHSA, ETHJA, Up & Over

CLOSING DATE: JUNE 19, 2017

METROPARKS POLO FIELD, MORELAND HILL, OH  
PLEASE PRINT OR TYPE CLEARLY - MAKE COPIES AS NEEDED

Name of Horse / Pony		USEF/IUSHJA#	Name of Rider(s)	
Name of Horse / Pony		USEF/IUSHJA#	Name of Rider(s)	
Color	Sex	Height	Yr. Foaled	Jr. Horse / Pony
				Jumper Equitation
				Hunter Grand Prix
				Rider Two

ALL SIGNATURES, ADDRESSES AND THE OWNER'S SOCIAL SECURITY NUMBER MUST APPEAR ON THE ENTRY FORM IN ORDER FOR THIS ENTRY TO BE PROCESSED

Name of Person/Company/Receiving Prize Money \_\_\_\_\_ SS#: Fed ID \_\_\_\_\_

Address if different from Owner \_\_\_\_\_

Credit Card # \_\_\_\_\_ Exp. Date \_\_\_\_\_ Code \_\_\_\_\_

Name on Card \_\_\_\_\_ Billing Zip \_\_\_\_\_ Phone \_\_\_\_\_

ENTER ONLINE: WWW.HORSESHOWSONLINE.COM

**Or Make Check Payable to and MAIL to**  
Chagrin Hunter Jumper Classic  
c/o 9129 Old Meadow Drive  
Chagrin Falls, OH 44023

**Show Sec. Barney Mallace (901) 606-3450**

Stalls @ \$250	
Jumper Nomination Fee \$175	
USEF Fee \$16	\$16
USHJA Zone Fee \$7	\$7
Office Fee \$50	\$50
Night Watch Fee \$20 (Required for Stabled Horses)	\$20
Grounds Fee \$50 (Required for All Horses)	\$50
Post Entry Fee (See Rules)	
USEF IHP FEE \$35	
USEF Show Pass Fee \$30	
USHJA Show Pass Fee \$30	
Classic Box Seating \$850	
Classic Table \$800	
<b>TOTAL</b>	

**FEDERATION ENTRY AGREEMENT** By entering a Federation-licensed Competition and signing this entry blank as the Owner, Lessee, Trainer, Manager, Agent, Coach, Driver, Rider, Handler, Vaultor or Longeur and on behalf of myself and my principals, representatives, employees and agents, I agree that I am subject to the Bylaws and Rules of The United States Equestrian Federation, Inc. (the "Federation") and the local rules of Chagrin Hunter Jumper Classic (Competition). I agree to be bound by the Bylaws and Rules of the Federation and of the Competition and to accept as final the decision of the Hearing Committee on any question arising under the Rules, and agree to release and hold harmless the Federation, their officials, directors and employees for any action taken under the Rules. I represent that I am eligible to enter and/or participate under the Rules, and every horse I am entering is eligible as entered. I also agree that as a condition of and in consideration of acceptance of entry, the Federation and/or the Competition may use or assign photographs, videos, audios, cables, casts, broadcasts, internet, film, new media or other likenesses of me and my horse taken during the course of the competition for the promotion, coverage or benefit of the competition, sport, or the Federation. Those likenesses shall not be used to advertise a product and they may not be used in such a way as to jeopardize amateur status. I hereby expressly and irrevocably waive and release any rights in connection with such use, including any claim to compensation, invasion of privacy, right of publicity, or to misappropriation. The construction and application of Federation rules are governed by the laws of the State of New York, and any action instituted against the Federation must be filed in New York State. See GR908.4.

**Release, Assumption of Risk, Waiver and Indemnification** This document waives import antil legal rights. Read it carefully before signing. I AGREE in consideration for my participation in this Competition to the following: I AGREE that the "Federation" and "Competition" as used above includes all of their officials, officers, directors, employees, agents, volunteers and affiliated organizations. I AGREE that I choose to participate voluntarily in the Competition with my horse, as a rider, driver, handler, vaultor, longeur, lessee, owner, agent, coach, trainer, or as parent or guardian of a junior exhibitor. I am fully aware and acknowledge that horse sports and the Competition involve inherent dangerous risks of accident, loss, and serious bodily injury including broken bones, head injuries, trauma, pain, suffering, or death ("Harm"). I AGREE to hold harmless and release the Federation and the Competition from all claims for money damages or otherwise for any Harm to me or my horse and for any Harm of any nature caused by me or my horse to others, directly or indirectly, from the negligence of the Federation or the Competition. I AGREE to expressly assume all risks of Harm to me or my horse, including Harm resulting from the negligence of the Federation or the Competition. I AGREE to indemnify (that is, to pay any losses, damages, or costs incurred by) the Federation and the Competition and to hold them harmless with respect to claims for Harm to me or my horse, and for claims made by others for my Harm caused by me or my horse while at the Competition. I have read the Federation Rules about protective equipment, including GR801 and, if applicable, EV114 and I understand that I am entitled to wear protective equipment without penalty, and I acknowledge that the Federation strongly encourages me to do so while WARNING that no protective equipment can guard against all injuries. If I am a parent or guardian of a junior exhibitor, I consent to the child's participation and AGREE to all of the above provisions and AGREE to assume all of the obligations of this Release on the child's behalf. I represent that I have the requisite training, coaching and abilities to safely compete in this competition. I AGREE that if I am injured at this competition, the medical personnel treating my injuries may provide information on my injury and treatment to the Federation on the official USEF accident/injury report form.

**BY SIGNING BELOW, I AGREE** to be bound by all applicable Federation Rules and all terms and provisions of this entry blank and all terms and provisions of this Prize List. If I am signing and submitting this Agreement electronically, I acknowledge that my electronic signature shall have the same validity, force and effect as if I affixed my signature by my own hand.

<p><input checked="" type="checkbox"/> <b>Owner's Signature (mandatory)</b></p> <p>NAME _____</p> <p>STREET _____</p> <p>CITY _____ STATE _____ ZIP _____</p> <p>TEL _____</p> <p>USEF/IUSHJA# _____</p> <p>EMAIL: _____</p> <p><input checked="" type="checkbox"/> Parent or Guardian Signature (required if rider is a minor)</p>	<p><input checked="" type="checkbox"/> <b>First Rider's Signature (mandatory)</b></p> <p>NAME _____</p> <p>STREET _____</p> <p>CITY _____ STATE _____</p> <p>ZIP _____ TEL _____</p> <p>US CITIZEN yes ___ no ___ D.O.B. _____</p> <p>USEF/IUSHJA# _____</p> <p>EMAIL: _____</p> <p><input checked="" type="checkbox"/> Parent or Guardian Signature (required if rider is a minor)</p>	<p><input checked="" type="checkbox"/> <b>Second Rider's Signature (mandatory)</b></p> <p>NAME _____</p> <p>STREET _____</p> <p>CITY _____ STATE _____</p> <p>ZIP _____ TEL _____</p> <p>US CITIZEN yes ___ no ___ D.O.B. _____</p> <p>USEF/IUSHJA# _____</p> <p>EMAIL: _____</p> <p><input checked="" type="checkbox"/> Parent or Guardian Signature (required if rider is a minor)</p>
<p><input checked="" type="checkbox"/> <b>Trainer's Signature (mandatory)</b></p> <p>NAME _____</p> <p>STREET _____</p> <p>CITY _____ STATE _____ ZIP _____</p> <p>TEL _____</p> <p>USEF/IUSHJA# _____</p> <p>EMAIL: _____</p> <p><input checked="" type="checkbox"/> Coach's Signature (if applicable)</p> <p>NAME: _____</p>		

STABLE WITH: \_\_\_\_\_ ARRIVING: \_\_\_\_\_ EMERGENCY CONTACT NAME/CELL PHONE: \_\_\_\_\_



Entry # \_\_\_\_\_



## HORSE & RIDER BIOGRAPHY FORM



**\$5,000 Horse & Hound Relay  
Exhibition Class**

**Presented by**



Friday July 14, 2017, after 5:30 pm

**ONE BIOGRAPHY FORM PER HORSE OR PONY: Register for the class online or in prize list by June 19, 2017**

**BIO DUE JUNE 19, 2017, to [drlaurahammel@gmail.com](mailto:drlaurahammel@gmail.com)**

**JUNIORS & AMATUERS ONLY**

**\$2500 .85m: Limited to 8 horse and dog teams.**

**\$2500 1.10m: Limited to 8 horse and dog teams.**

**Cost of entry: \$50** Proceeds from the Horse and Hound entry fees to benefit Geauga County Humane Society's Rescue Village

**Prizes per class (Classes pinned separately. Prize money split between dog and horse teams.):**

**1st: \$390 2<sup>nd</sup>: \$270 3<sup>rd</sup>: \$240 4<sup>th</sup>: \$210 5<sup>th</sup>: \$195 6<sup>th</sup>: \$195 7<sup>th</sup>: "R" 8<sup>th</sup>: "R"**

**You and your horse will be randomly paired with a dog and handler for a Calcutta competition benefitting Rescue Village and charities of the Chagrin Hunter Jumper Classic. Tell us about the adventures you've had with your horse—such as classes you've won, challenges you've overcome, or anything else you want us to know. Your story will be published in benefit information and read by the show announcer while you are riding the course. Thanks for riding!**

Equine name: \_\_\_\_\_ Age: \_\_\_\_\_ Jump height:  .85m  1.10m

Rider name: \_\_\_\_\_ Age: \_\_\_\_\_ Cell: \_\_\_\_\_ Email: \_\_\_\_\_

**All riders must submit a photo (digital preferred) and short bio about their horse and their riding history: \_\_\_\_\_**

*(continue on separate sheet if necessary)*

I hereby release my photo and personal bio for use in publicity materials and will make no claim against the Chagrin Hunter Jumper Classic, including the competition management, officials, directors, employees, agents, personnel, volunteers and Federation affiliates for use of such materials. Hard copies of photos will be returned to the above address. Send digital photo to: [drlaurahammel@gmail.com](mailto:drlaurahammel@gmail.com) by June 19, 2017

Rider (or parent if minor) Signature: \_\_\_\_\_ Owner Signature: \_\_\_\_\_



# WCHR

WORLD CHAMPIONSHIP HUNTER RIDER

## Welcome to the 2017 World Championship Hunter Rider Series!

Thank you to the exhibitors and managers who make this program so successful. All of the competitions listed below have been selected as 2017 WCHR Member Events and are eligible for inclusion in Regional and National point standings.

*Be part of the fun in 2017!*

### CENTRAL MOUNTAIN

- Scottsdale Spring Classic**  
March 22-26, 2017 • Scottsdale, AZ
- GO Show**  
July 12-16, 2017 • Oklahoma City, OK
- Summer in the Rockies VII**  
July 19-23, 2017 • Parker, CO
- Santa Fe Equestrian Fiesta**  
August 2-6, 2017 • Santa Fe, NM
- Colorado Fall Classic**  
September 14-17, 2017 • Parker, CO

### MID ATLANTIC

- Lexington Spring Premiere**  
April 26-30, 2017 • Lexington, VA
- Keswick Horse Show**  
May 16-21, 2017 • Keswick, VA
- Upperville Colt & Horse Show**  
June 5-11, 2017 • Upperville, VA
- Loudoun Benefit Horse Show**  
June 14-18, 2017 • Upperville, VA
- Brandywine Valley Summer Series I**  
June 27-July 2, 2017 • Devon, PA
- Lexington National Horse Show**  
August 9-13, 2017 • Lexington, VA
- Middleburg Classic**  
September 20-24, 2017 • Leesburg, VA

### MIDWEST

- Kentucky Spring Horse Show**  
May 10-14, 2017 • Lexington, KY
- Country Heir II**  
June 14-18, 2017 • Lexington, KY
- Showplace Spring Spectacular III**  
June 20-25, 2017 • Wayne, IL
- Chagrin Valley Hunter Jumper Classic**  
July 11-16, 2017 • Moreland Hills, OH

- Great Lakes Equestrian Festival II**  
July 12-16, 2017 • Williamsburg, MI
- Equifest II**  
August 1-6, 2017 • Wayne, IL
- Bluegrass Festival Horse Show**  
August 15-20, 2017 • Lexington, KY

### NORTHEAST

- Old Salem Farm Spring Horse Show**  
May 16-21, 2017 • North Salem, NY
- Fairfield County Hunt Club June Benefit Show**  
June 20-24, 2017 • Westport, CT
- Lake Placid Horse Show**  
June 27-July 2, 2017 • Lake Placid, NY
- Manchester Classic Horse Show**  
July 19-23, 2017 • East Dorset, VT
- Hampton Classic Horse Show**  
August 27-September 3, 2017 • Bridgehampton, NY

### NORTHWEST

- Spring National Hunter**  
April 11-16, 2017 • Monroe, WA
- Pacific Northwest Hunter & Jumper**  
May 17-21, 2017 • Monroe, WA
- Canadian Premier**  
May 24-28, 2017 • Langley, BC
- Early Summer Classic**  
June 14-18, 2017 • Wilsonville, OR
- Oregon High Desert Classic #2**  
July 26-30, 2017 • Bend, OR
- Summer Fort Classic**  
August 16-20, 2017 • Langley, BC
- Northwest Spectacular**  
August 30-September 3, 2017 • Wilsonville, OR

- Northwest Autumn Classic**  
September 13-17, 2017 • Monroe, WA

### SOUTH CENTRAL

- Great Southwest Winter Series II**  
February 8-12, 2017 • Katy, TX
- Pin Oak Horse Show I**  
March 22-27, 2017 • Katy, TX
- Pin Oak Charity**  
March 28-April 1, 2017 • Katy, TX
- Spring Gathering 2017**  
April 5-9, 2017 • Katy, TX
- Texas Shoot-Out**  
April 26-30, 2017 • Tyler, TX
- Lone Star Round Up II**  
May 3-7, 2017 • Tyler, TX
- Show Jumping Classic**  
May 17-21, 2017 • Tyler, TX
- Texas Rose Sporthorse Cup**  
September 6-10, 2017 • Tyler, TX

### SOUTHEAST

- WEF 6 Hunter Spectacular**  
February 15-19, 2017 • Wellington, FL
- Ocala Winter Finals**  
March 8-13, 2017 • Ocala, FL
- Gulf Coast Winter V**  
March 9-13, 2017 • Gulfport, MS
- Aiken Spring Classic Finale**  
April 26-30, 2017 • Aiken, SC
- Aiken Charity I**  
May 3-7, 2017 • Aiken, SC
- Tryon Spring V**  
May 17-21, 2017 • Mill Spring, NC
- Atlanta Summer Classic II**  
June 21-25, 2017 • Corryer, GA
- Blowing Rock Charity Horse Show I**  
July 25-30, 2017 • Blowing Rock, NC

### SOUTHWEST

- Desert Circuit VIII**  
March 14-19, 2017 • Thermal, CA
- Blenheim Spring Classic III**  
April 5-9, 2017 • San Juan Capistrano, CA
- Del Mar National Horse Show**  
May 2-7, 2017 • Del Mar, CA
- Showpark Ranch & Coast**  
May 9-14, 2017 • Del Mar, CA
- Central California Classic**  
May 31-June 4, 2017 • Paso Robles, CA
- Blenheim June Classic 1**  
June 7-11, 2017 • San Juan Capistrano
- Giant Steps Charity Classic**  
August 1-6, 2017 • Petaluma, CA
- Memle Charity Horse Show**  
August 8-13, 2017 • Atherton, CA

### NATIONAL

- Devon Horse Show & Country Fair**  
May 25-June 4, 2017 • Devon, PA
- Capital Challenge**  
October 2-8, 2017 • Upper Merion, MD

For more information  
contact [Lily Griffin](mailto:Lily.Griffin@ushja.org)  
at [Igriffin@ushja.org](mailto:Igriffin@ushja.org) or  
(859) 225-6714, or visit  
[www.ushja.org/wchr](http://www.ushja.org/wchr).

# Do you have what it takes to be a World Championship Hunter Rider?



# WCHR

WORLD CHAMPIONSHIP HUNTER RIDER

PHOTOS: THE BOOK LLC, SHAWN MCMILLEN, JAMES STUART, JERRY MOHME, JAMES LESLIE PARKER, JAY GOSS

## Congratulations to the 2016 WCHR Midwest Regional Winners!

Adult Amateur - **Garland Alban**

Amateur Owner 3'3"- **Nancy Hooker**

Amateur Owner 3'6"- **Becky Gochman**

Children's - **Andrew Elhindi**

Developing Professional - **Geoffrey Hesslink**

Handy Hunter - **Kelley Farmer**

Junior 3'3"- **Madison Arani**

Junior 3'6" - **Emma Kurtz**

Pony - **Saylor Shea**

Professional - **Kelley Farmer**

Developing Pro Owner - **Belhaven Stables LLC**

Professional Owner -

**Bibby Hill, Kelley Farmer, Sue Pinney**

### JOIN TODAY... and be part of the fun in 2017!

*Become a member by Midnight Eastern time of the last day of this competition and receive points toward Regional and National awards, the Medallion Program and qualifying for the WCHR Finals Challenge classes held during the Capital Challenge Horse Show.*

For more information contact

Lily Griffin at [lgriffin@ushja.org](mailto:lgriffin@ushja.org) or (859) 225-6714, or visit [www.ushja.org/wchr](http://www.ushja.org/wchr).

UNITED STATES



HUNTER JUMPER ASSOCIATION

(859) 225-6700 | [USHJA.org](http://USHJA.org)

# 2017 CHAGRIN HUNTER JUMPER CLASSIC

## CLASSIC BOX & TABLE ORDER FORM



PURCHASE TICKETS ONLINE!

@ [www.chagrinhunterjumperclassic.org](http://www.chagrinhunterjumperclassic.org)

### CLASSIC BOX OR TABLE OF 6 SEATS

Boxes provide covered ringside viewing. Tables are under trees in middle aisle between rings. Both include access to Classic Box Holder hospitality tent and one VIP Parking Pass (additional VIP Parking Passes are available for \$10). Boxes are assigned by date payment is received (by mail or online).

Circle box location: **Ringside JUMPER**

**Ringside HUNTER**

- Entire Show: 11 Days 7/6 - 16: \$850 Box; \$800 Table
- Rated Week: 6 Competition Days 7/11 -16 : \$750 Box; \$700 Table
- *Buy a box on both sides for entire show and receive a \$200 discount.*

If you purchase only one box, you may be able to sit in open boxes on the other ring providing the seats are not occupied. Box holder wristbands and parking passes are available for pick up at the Trophy Trailer beginning July 6. No tickets will be mailed.

Payment must be included.  
Make checks payable to CVPHA or  
use credit card for online order.

\*Name \_\_\_\_\_

Name for Box or Table \_\_\_\_\_

\*Address \_\_\_\_\_

\*City \_\_\_\_\_ State \_\_\_\_\_ Zip \_\_\_\_\_

\*Phone \_\_\_\_\_

\*Email \_\_\_\_\_

**RETURN FORM TO**  
**Chagrin Hunter Jumper Classic**  
**PO Box 23552**  
**Chagrin Falls, OH 44023**  
**or order and payonline**

For more information  
please call (440) 897-5294  
*\*required information*

### Credit Card Payment

\_\_\_\_ MC    \_\_\_\_ Visa    \_\_\_\_ Amex    \_\_\_\_ Discover

Credit Card# \_\_\_\_\_

Expiration Date \_\_\_\_\_ CSV \_\_\_\_\_ Billing Zip Code \_\_\_\_\_

Name on Card \_\_\_\_\_

Signature \_\_\_\_\_

# 2017 CHAGRIN HUNTER JUMPER CLASSIC

## GRAND CHAMPION VIP ORDER FORM



PURCHASE TICKETS ONLINE!

@

www.chagrinhunterjumperclassic.org

### GRAND CHAMPION VIPs

A limited number of premium VIP tables and boxes are available in the Classic Box seating area along the jumper ring. VIPs seating for 6 guests for the entire show, access to hospitality tent and bar, a catered meal for eight guests for the USHJA International Hunter Derby, plus admission to the festivities for the entire 11 days, 6 VIP parking passes, and a golf cart for days you are on the grounds. Tables are assigned by date payment is received (by mail or online).

Entire Show: 11 Days 7/7 – 7/17: \$2,750

\*Name \_\_\_\_\_

Name for Table \_\_\_\_\_

\*Address \_\_\_\_\_

\*City \_\_\_\_\_ State \_\_\_\_\_ Zip \_\_\_\_\_

Phone \_\_\_\_\_

\*Email \_\_\_\_\_

Payment must be included.  
Make checks payable to CVPHA or  
pay online by credit card.

RETURN FORM TO  
Chagrin Hunter Jumper Classic  
PO Box 23552  
Chagrin Falls, OH 44023 or  
complete online

For more information  
please call (440) 897-5294  
*\*required fields*

Credit Card Payment			
_____ MC	_____ Visa	_____ Amex	_____ Discover
Credit Card # _____			
Expiration Date _____	CSV _____	Billing Zip Code _____	
Name on Card _____			
Signature _____			



## FEED & BEDDING PRE-ORDER FORM

Horse or BarnName: \_\_\_\_\_

Trainer Name : \_\_\_\_\_

ArrivalDate: \_\_\_\_\_

StableWith/Nextto: \_\_\_\_\_

\_\_\_\_\_ Shavings (# of bags)

\_\_\_\_\_ Timothy Hay (# of bales)

\_\_\_\_\_ Straw (# of bales)

\_\_\_\_\_ Feed (specify items needed below)

Mail to: Chagrin Valley Hunter Jumper Classic  
9129 Old Meadow Drive, Chagrin Falls, OH 44023

*Signature is required for order to be placed.*

---

Delivery will take place the day before or the morning of arrival.

Orders CANNOT be returned once delivered.

# CHAGRIN VALLEY PHA HORSE SHOW 2017 PLEDGE OF SUPPORT

PLEASE PRINT CLEARLY

Contact Name: \_\_\_\_\_ Date: \_\_\_\_\_

Organization, Company or Personal Name: \_\_\_\_\_  
(as you want it to appear in the program listing)

Address: \_\_\_\_\_

Phone: \_\_\_\_\_ Email: \_\_\_\_\_

Signature: \_\_\_\_\_ Date: \_\_\_\_\_

**CUSTOM SPONSORSHIP PACKAGES:** You will be contacted regarding the benefits of your sponsorship at these levels which can include, among other things, special seating, advertising benefits, product demonstrations, awards presentations, tickets, event venue opportunities and more!

- Check one:
- |                                   |                                   |                                   |                                   |
|-----------------------------------|-----------------------------------|-----------------------------------|-----------------------------------|
| <input type="checkbox"/> \$50,000 | <input type="checkbox"/> \$30,000 | <input type="checkbox"/> \$20,000 | <input type="checkbox"/> \$16,000 |
| <input type="checkbox"/> \$12,000 | <input type="checkbox"/> \$10,000 | <input type="checkbox"/> \$9,500  | <input type="checkbox"/> \$7,000  |
| <input type="checkbox"/> \$5,000  | <input type="checkbox"/> \$2,500  | <input type="checkbox"/> \$1,500  | <input type="checkbox"/> \$500    |

## MEMORIAL DONATION

I am interested in designating an individual contribution to the 501(c)(3) Chagrin Valley PHA Horse Shows, Inc., as a memorial contribution designated to:

\_\_\_\_\_ (please indicate name exactly how you wish it to appear in the insert). I pledge \$ \_\_\_\_\_

I would like my donation to be recognized in the insert: Yes  No

## INDIVIDUAL DONATION

I am interested in making an individual contribution to the 501(c)(3) Chagrin Valley PHA Horse Shows, Inc. I pledge \$ \_\_\_\_\_

I would like my donation to be recognized in the insert: Yes  No

## Payment Information:

Check One:  Bill me in 2017  Payment Enclosed (make checks payable to CVPHA Horse Shows, Inc.)

Mastercard  Visa  Discover  AMEX Card # \_\_\_\_\_

Expiration Date: \_\_\_\_\_ Name on Card: \_\_\_\_\_ Signature: \_\_\_\_\_



### For more information contact:

Megan Moshontz-Bash  
216-410-5925 • megginbash@gmail.com

Laura Hammel  
216-224-5383 • drlhammel@gmail.com



### Please return check & form to:

CVPHA Horse Shows, Inc.  
c/o Lori Proch  
9129 Old Meadow Dr.  
Chagrin Falls, OH 44023

USEF Competition Name: Chagrin Hunter Jumper Classic  
 Competition Division(s) and Rating(s):

USEF#: 2838 "Premier" Jumper 4\*

Green Hunter 3', 3'3, 3'6, 3'9  
 Green Conformation Hunter  
 High Performance Hunter  
 Performance Hunter 3'3, 3'6

High Performance Conformation Hunter  
 Amateur Owner 3'3 Hunter  
 Amateur Owner Hunter

Junior Hunter  
 Junior Hunter 3'3  
 Young Hunter

Green Pony Hunter  
 Pony Hunter

"C" Adult Amateur Hunter  
 "C" Children's Hunter  
 "C" Adult Jumper

"C" Children's Jumper  
 "C" USHJA Hunters



# WAYS TO SAVE AS A US EQUESTRIAN MEMBER



Save 5% on qualifying purchases at checkout

Protect yourself with discounted liability and AD&D insurance



Buy 10 bags of feed and get one free!

Save up to 28% on equipment like Gators™ and lawnmowers



JOHN DEERE



Get started with a discounted emergency roadside assistance plan.

## PLUS MANY MORE!





**Enter the Washington International Horse Show Children's & Adult Championships and WIHS Equitation!**

Earn points here to qualify for the \$10,000 Adult Jumper Final  
\$10,000 Adult Hunter Final  
\$10,000 Children's Jumper Final  
\$10,000 Children's Hunter Final  
WIHS Equitation Final  
WIHS Pony Equitation Final

at the Washington International Horse Show in Washington, DC.

Become a member of the WIHS Children's & Adult Championships and WIHS Equitation to receive points. Competitors need only submit one WIHS membership application for the current qualifying year to accrue points in all WIHS sanctioned classes.

Membership is valid for the qualifying year and entitles a rider to earn points on one or more horses in any of the divisions.



WIHS  
1298 Royal Rd  
Annville, PA 17003  
717-867-5643;  
717-867-2174 fax

Amateur     Junior  
 Date \_\_\_\_\_ Qualifying Year: (Sept 1 - Aug 31) \_\_\_\_\_  
 Name \_\_\_\_\_  
 Address \_\_\_\_\_  
 City \_\_\_\_\_ State \_\_\_\_\_ Zip Code \_\_\_\_\_  
 Phone \_\_\_\_\_ Fax \_\_\_\_\_  
 DOB \_\_\_\_\_ USEF #: \_\_\_\_\_  
 Email \_\_\_\_\_  
 Please bill my  Payment of \$40.00 enclosed  
 MasterCard     Visa     Discover     AmEx    Exp    CSV  
 Account # \_\_\_\_\_ / \_\_\_\_\_ / \_\_\_\_\_  
 Cardholder \_\_\_\_\_  
 Address \_\_\_\_\_  
 City \_\_\_\_\_ State \_\_\_\_\_ Zip Code \_\_\_\_\_  
 I authorize Ryegate Show Services on the behalf of the WIHS to debit my account.  
 Signature \_\_\_\_\_  
 www.wihs.org    Membership is effective the date received  
 wihs@ryegate.com    in the league office with payment.  

<b>Received</b>	<b>Check #</b>
-----------------	----------------

**Join online at [www.ryegate.com](http://www.ryegate.com)**

**North American League**



[www.ryegate.com](http://www.ryegate.com)  
[nal@ryegate.com](mailto:nal@ryegate.com)

In order for riders to receive credit, they must be a current member.

Membership is valid for the qualifying year and entitles the rider to earn points on one or more horses shown in accredited classes.

National Finals are held at the Pennsylvania National Horse Show.

West Coast Finals are held at the Las Vegas National Horse Show.

Please complete and mail the application with payment to:

North American League  
1298 Royal Rd  
Annville, PA 17003  
717-867-5643; 717-867-2174 fax

Membership is effective the date received in the league office with payment.     Amateur     Junior  
 Date \_\_\_\_\_ Qualifying Year: (Sept 1 - Aug 31) \_\_\_\_\_  
 Name \_\_\_\_\_  
 Address \_\_\_\_\_  
 City \_\_\_\_\_ State \_\_\_\_\_ Zip Code \_\_\_\_\_  
 Phone \_\_\_\_\_ Fax \_\_\_\_\_  
 DOB \_\_\_\_\_ USEF #: \_\_\_\_\_  
 Email \_\_\_\_\_  
 Please bill my  Payment of \$40.00 enclosed  
 MasterCard     Visa     Discover     AmEx    Exp    CSV  
 Account # \_\_\_\_\_ / \_\_\_\_\_ / \_\_\_\_\_  
 Cardholder \_\_\_\_\_  
 Address \_\_\_\_\_  
 City \_\_\_\_\_ State \_\_\_\_\_ Zip Code \_\_\_\_\_  
 I authorize Ryegate Show Services on the behalf of the NAL to debit my account.  
 Signature \_\_\_\_\_  

<b>Received</b>	<b>Check #</b>
-----------------	----------------



*Celebrating 69 Years!*  
**June 6 - 10, 2017**



*Featuring:*  
**\$25,000 Grand Prix of Germantown**  
**\$15,000 Open Jumper Welcome Stake**  
**\$5,000 WIHS/NAL Children's/Adult Jumper Classic**  
**\$5,000 Low/High Jr/AO Jumper Classic**  
**\$4,000 Gamblers Choice**  
**\$5,000 GCHS Hunter/Jumper Versatility Challenge**  
**\$5,000 Germantown Hunter Classic**  
**\$2,500 Pony Hunter Classic**

**USEF Premier (AA) Rated - USEF Jumper Rating - Four Stars**

ENTRIES CLOSE 5/14/17

website: [www.gchs.org](http://www.gchs.org) / e-mail: [ringmaster@gchs.org](mailto:ringmaster@gchs.org)



Havens Schat



Riding is an Art

Antarès Custom Saddles  
210 N. 21<sup>st</sup> Street, Suite C  
Purcellville, VA 20132  
800-250-9284  
[www.antares-sellier.com](http://www.antares-sellier.com)



Antarès workshop  
Antarès Sellier France  
34, rue des Fougères  
17100 Saintes  
France

# WHAT'S YOUR STORY?

Whatever  
it is, we  
can help  
you tell it.

Quickly.  
Effectively.  
Memorably.  
Reasonably.  
Globally.

Learn more about us at [www.mchalekoepke.com](http://www.mchalekoepke.com)  
Or call **Sally Koepke** at **440-542-0080, ext. 229.**

*Proud sponsor and marketing communications partner  
of the Chagrin Hunter Jumper Classic*





# CLEVELAND EQUINE CLINIC

Cleveland Equine Clinic provides the finest ambulatory and in-patient services. From pre-purchase exams to sports medicine, and lameness services, including innovative procedures such as IRAP, Stem Cell, and PRP. Cleveland Equine Clinic also offers acupuncture, dental procedures, respiratory, reproductive, and elective surgical procedures. We also provide a standing Hallmarq MRI for further lameness diagnostics.

**Call 330-422-0040 to schedule a farm visit or out-patient visit at our facility**

## *Veterinarians*

- ◆ Ronald L. Genovese, VMD
- ◆ Brett A. Berthold, DVM
- ◆ Emily J. Miller, DVM
- ◆ Corey L. Paradine, DVM
- ◆ Sean T. Allison, DVM
- ◆ Sasha N. Hill, DVM
- ◆ Jessie L. Hennessey, DVM
- ◆ Holly K. Snyder, DVM
- ◆ Lauren M. Fischer, DVM

## *Consultant Staff:*

- ◆ James T. Robertson, DVM, DACVS

[www.ClevelandEquine.com](http://www.ClevelandEquine.com)

TEL: 330-422-0040 FAX: 330-422-0044 | 3340 Webb Road, Ravenna, Ohio 44266

Conveniently located near the Ohio Turnpike, I-480 and Route 44



# Surface Solutions for all your stable needs.

- Wash Racks, Floors & Walls
- Grooming Stalls
- Horse Stalls
- Aisleways
- Trailer Interiors



- Custom Engineered, Chemically Welded, 6.35mm, PVC Sheets
  - black, brown, terra cotta, dark grey, light grey
- Crumb Rubber Accents
  - Custom Colors
- CORE Custom Stall™  
Anti-fatigue Seamless Flooring
- Rubber Matting Adhesives

*“CORE found solutions to my flooring and building issues at my stable. The floor came out perfect! It looks great and is safe for the horses. I highly recommend CORE Equine.”*

*Megan Moshontz Bash  
Owner and Professional Rider, Cleveland Equestrian*

## CORE Surface+™

*It's just what it sounds like.*

We take existing surfaces and add a PLUS. Think of it as re-engineering surfaces to make them even better than they were intended to be. Whether they are old, existing surfaces or new, stock materials, we innovate to make them better.

Call for more information and pricing

Vicki DuBay 216.410.7570  
vickid@corerestorationgroup.com



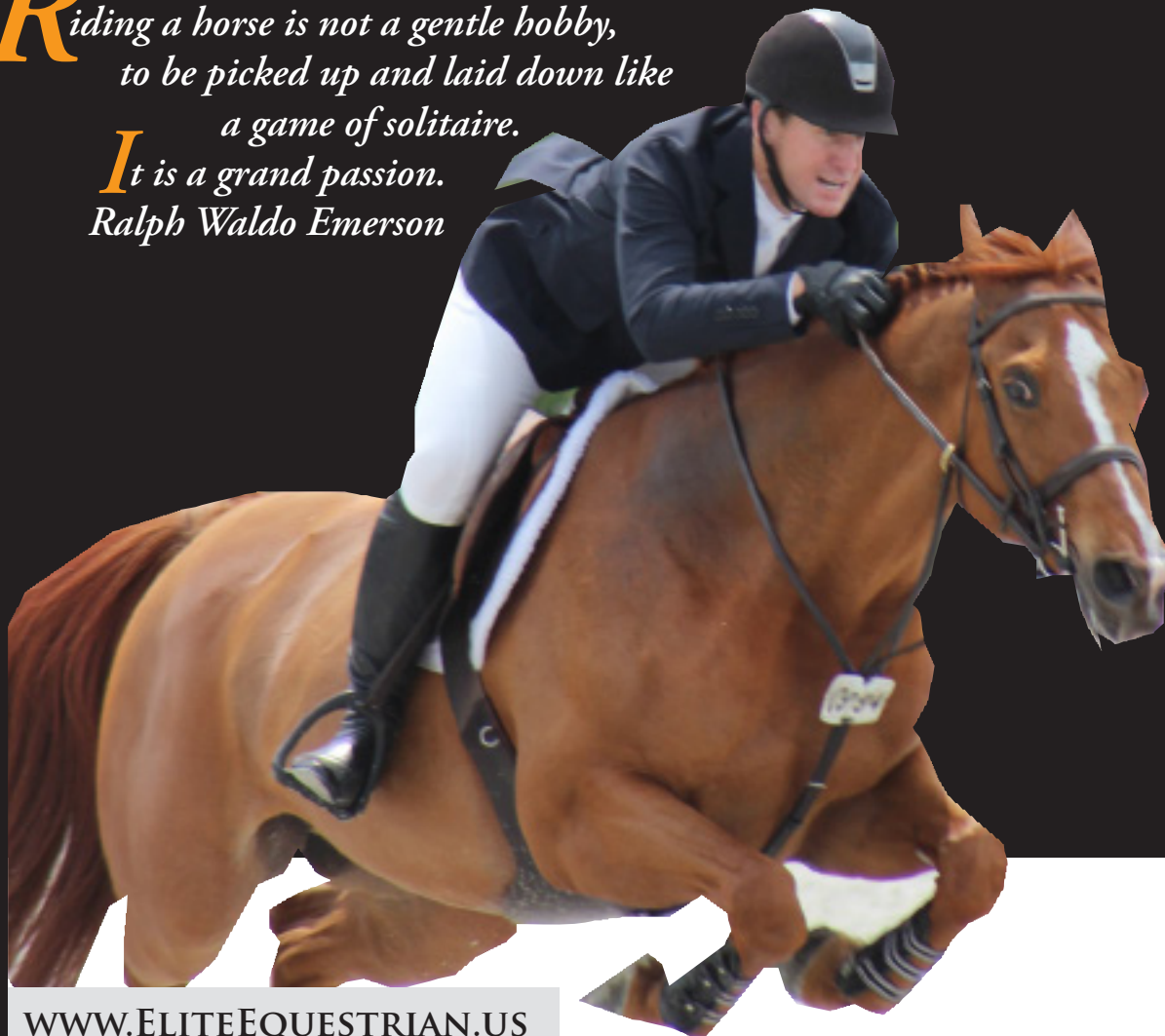
*For those who ride with grand passion...*

# ELITE EQUESTRIAN<sup>®</sup>

*Celebrating The Equestrian Lifestyle*

**R**iding a horse is not a gentle hobby,  
to be picked up and laid down like  
a game of solitaire.

**I**t is a grand passion.  
Ralph Waldo Emerson



[WWW.ELITEEQUESTRIAN.US](http://WWW.ELITEEQUESTRIAN.US)

*Featuring Equine Related Fashion, Art, Health, Tack and Training For  
Multiple Disciplines. Find Your Hard Copy At This Event  
Read Globally Online • Free On-line Subscriptions*

To request on-line subscriptions and for media kit inquiries, email [info@eliteequestrian.us](mailto:info@eliteequestrian.us)

**Transporting the competitive horse world  
one flight at a time.**



WEEKLY FLIGHTS TO AND FROM EUROPE  
AND THE REST OF THE WORLD.

.....  
WEEKLY DOMESTIC FLIGHTS AS WELL AS  
FLIGHTS TO SPRUCE MEADOWS.

**horseflight**  .com  
Excellence in International Horse Shipping

237 Old Turnpike Road  
Califon, NJ 07830  
office +1 (908) 832-5848  
fax +1 (866) 467-6704  
[www.horseflight.com](http://www.horseflight.com)



# C. JARVIS INSURANCE AGENCY INC.



Since 1946, Jarvis insurance has set the bar for international equine insurance. Owned and operated by a family of horsemen, you can rest assured knowing that we have our hands on the pulse of the industry, looking out for you every step of the way.

YOUR PASSION IS OUR LIFE... 67 YEARS AND COUNTING.

FROZEN SEMEN IN STORAGE COVERAGE	TAKAFUL COVERAGE 100% SHARIA COMPLIANT	FARM & RANCH COVERAGE	WORLDWIDE & SINGLE AIR TRANSIT COVERAGE
EQUINE RELATED LIABILITY	EQUINE MORTALITY & MAJOR MEDICAL INSURANCE	PROSPECTIVE FOAL & UNBORN FOAL COVERAGE	PERSONAL ACCIDENT - PROFESSIONAL & NON-PROFESSIONAL HORSEMEN

TEL: 440.248.5330 • FAX: 440.248.8737 • INFO@JARVISINSURANCE.COM • WWW.JARVISINSURANCE.COM

38750 Mentor Ave.  
Willoughby, OH

# LEIKIN

MOTOR COMPANIES

www.LEIKINMOTOR.com  
440-946-6900

*Family Owned And Operated Since 1968*



**VOLVO OF WILLOUGHBY**



***SPRINTER***  
of Willoughby



Mercedes Benz  
of Willoughby



Here's to those  
removing obstacles for people in need.

We're proud to be a part of this charitable and worthy cause.  
[hmmcreate.com](http://hmmcreate.com).





## OHIO PROFESSIONAL HORSEMEN'S ASSOCIATION

Committed to enhancing the equestrian life in northeastern Ohio through professional training, local competitions and complete year-end awards presentations.

*Membership available to all who participate in, or simply appreciate, life with horses!*

*Please join us!*

Membership information available at

[www.opha.org](http://www.opha.org)

## Upcoming OPHA Events...

**OPHA Last Chance  
Horse Show**

**October 20, 21 & 22**

**Chagrin Valley Farms**

**OPHA Annual  
Awards Banquet**

**November 17**

**Executive Caterers at Landerhaven**

*The OPHA is proud to have provided the Cleveland Grand Prix trophy in honor of longtime friend Laddie G. Andahazy*

**Good luck, competitors!**

# GET READY FOR... **SUMMER!**

Your Source for  
**PREMIUM OUTDOOR FUN!**



**SWING  
SETS**

**TEST PLAY  
TODAY!**



**TRAMPOLINES**



**BASKETBALL  
HOOPS**



**PARTIES!**



Time to get out and play!  
**CALL OR VISIT TODAY!**

ORANGE/ WARRENSVILLE HTS  
4400 Renaissance Pkwy • 440.729.0909

.....  
AVON 1014 Jaycox Rd • 440.937.5760

.....  
MEDINA 2570 Medina Rd • 330.725.3388

[www.PgWorld.com](http://www.PgWorld.com)  

# THIS IS YOUR HALL OF FAME

- SNOWMAN
- Kathy Kusner
- Harry D. Chamberlin
- Jimmy Williams
- SAN LUCAS
- Bartalan de Nemethy
- William Steinkraus
- IDLE DICE
- Leonard A. King, Jr.
- Steve Stephens
- Larry Langer
- CALYPSO
- John D. Ammerman
- Hap Hansen
- Jane Clark
- Karen Golding
- GEM TWIST
- Neal Strappo
- ABDULLAH
- Dr. John Steele
- Marcia "Mousie" Williams
- Joe Fargis
- Conrad Homfeld
- FOR THE MOMENT
- Michael Matz
- Robert J. Burke
- Edward "Ned" King
- TOUCH OF CLASS
- Lt. Col. John W. Russell
- Johnny Bell
- Carol Durand
- SINJON
- George Morris
- Rodney Jenkins
- Melanie Smith Taylor
- Mickey Walsh
- JET RUN
- Pamela Carruthers
- Gene Mische
- Gordon Wright
- Dr. Robert C. Rost
- Barbara Worth Oakford
- Frank Chapot
- TRAIL GUIDE
- Eleonora R. Sears
- Mary Mairs Chapot
- Morton W. "Cappey" Smith

## Keep it strong. Donate today.

The Show Jumping Hall of Fame immortalizes the men, women and horses who have made great contributions to the sport.

Made possible through the generosity of people who, like you, care about the sport, the Show Jumping Hall of Fame maintains various programs to educate about the history of show jumping and pay tribute to those who have helped make it great.

Contribute to the longevity of our sport. Donate today.



**Bowie and Grace Allen  
Champion 2016  
High Score Jumper**



## **Support Retired Racehorses JOIN THE TAKE2 THOROUGHBRED LEAGUE**

**Feather and Scotty Sherman  
Champion 2016  
High Score Hunter**



**Awarding \$30,000 in Year End HIGH-SCORE AWARDS\*  
paid out to 10th place!**

To join the TAKE2 Thoroughbred League, or for more information, go to: [www.take2tbreds.com](http://www.take2tbreds.com)

Email: [take2tbreds@gmail.com](mailto:take2tbreds@gmail.com).

The qualifying period for 2017 is October 3, 2016 through August 27, 2017.



The TAKE2 Second Career Thoroughbred Program Inc. promotes new careers for retired racehorses, sponsoring Thoroughbred Hunter and Jumper Divisions at horse shows nationwide.

\*Must be a TAKE2 League member to win High-Score Awards.

*TAKE2 is a 501 (c)(3) organization*

# THE ONE STOP SOURCE FOR ALL YOUR NEEDS — SALES, LEASE, RENTAL, PARTS AND SERVICE



**Ohio** Ag Equipment

**Ohio** **CAT**

**Ohio** **CAT** Rental  
STORE

[www.OhioCat.com](http://www.OhioCat.com)



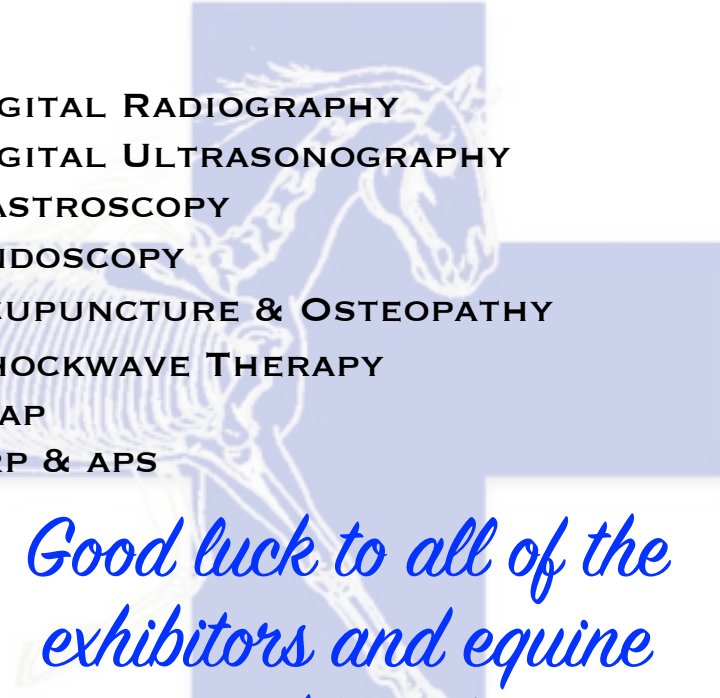
# David Miller, DVM

---

SUMMIT EQUINE VETERINARY SERVICES

---

SPORTS MEDICINE \* ACUPUNCTURE \* WELLNESS CARE



DIGITAL RADIOGRAPHY  
DIGITAL ULTRASONOGRAPHY  
GASTROSCOPY  
ENDOSCOPY  
ACUPUNCTURE & OSTEOPATHY  
SHOCKWAVE THERAPY  
IRAP  
PRP & APS

*Good luck to all of the  
exhibitors and equine  
athletes!*

---

P.O. Box 578 Bath, Ohio 44210

(330)666-7909

DMillerDVM@aol.com \* DMillerDVM.com

---



P.O. Box 23552  
Chagrin Falls, OH 44023

**Competitors are encouraged to submit their show entries online at:**

**[www.HorseShowsOnline.com](http://www.HorseShowsOnline.com)**